

2024



Corporate Book

Foreword

PBA Plan Bee Architecture is your single source for planning and designing intricate projects.

With a robust portfolio across the Middle East and Africa, we strive to be at the forefront of international design.

- > Designing large-scale projects with increasing complexity.
- > Operating across diverse regions, markets, and sectors.
- > Contributing to the world's most ambitious future projects.

A Multi-Disciplinary Team Delivers Your Vision

Our Beirut-based team boasts extensive experience across all sectors. We leverage this expertise to create engaging spaces, venues, and communities. We prioritize thoughtful design, user enjoyment, and future-proof solutions.

At the Heart of Our Philosophy: Uniquely Exceptional

We believe each client and project deserves a customized, exceptional solution.

Our expertise in international best practices, design trends, and technology empowers us to offer strategic insights for complex project design and investment. Through strategic planning and design, our team delivers places that enhance user quality of life and are well-equipped for future challenges.

Ready to Build the Future? Contact Us.

We're here to assist you in an advisory or design role. Let's discuss your project!

Contact us now: info@planbeearchitecture.com



Contents

01. OUR APPROACH

| | |
|----------------------------------|----|
| Our Approach | 8 |
| Our Team | 10 |
| Our Commitment & Core Principles | 14 |

02. KNOWLEDGE

| | |
|----------------|----|
| Design Process | 18 |
| Work Process | 22 |

03. OUR CLIENTS

| | |
|-------------|----|
| Our Clients | 26 |
|-------------|----|

04. SELECTED PROJECTS

| | |
|-------------------|-----------|
| Selected Projects | 30 |
| Contacts | xx |

01.
**Our
Approach**

Our Approach

*Simplify, Streamline,
Succeed:
Our One-Stop Shop
Advantage*

Plan Bee Architects (PBA) is a Beirut-based design firm with a multi-disciplinary team of specialists. We serve a diverse portfolio of projects spanning Europe, the Middle East, and Africa.

We offer an integrated approach, bringing together a carefully curated team of experts across various design and development services. This allows us to provide seamless solutions for complex projects, regardless of market or stage.

Our philosophy goes beyond simply delivering good work. We take the time to understand your unique needs and context. Through a collaborative partnership, we create personalized solutions that exceed your expectations.

We measure our success by yours. Our team's expertise provides strategic insights in design, operation, and investment, allowing us to deliver tangible results that enhance your competitive advantage and bottom line.



VISION

Our vision is to inform the future evolution of design

- > By striving for excellence;
- > By aspiring to be recognized leaders in our field;
- > By facilitating our clients' utmost success

MISSION

Our mission is to exceed our clients aspirations

- > To create unique, tailor made solutions;
- > To work in partnership with our clients;.
- > To provide culturally sensitive solutions;
- > To achieve sustainable, high quality results

Our Team

Building Success: The Power of Teamwork

Where we live, work, and play profoundly shapes our lives. PBA understands this, and we are dedicated to creating well-designed spaces that enhance the lives of those who use them. Our holistic approach seamlessly integrates urban design, landscape, infrastructure, and architecture to foster a strong sense of local identity and community.

Our team: a close-knit group of talented international designers, fueled by a shared commitment to excellence and continuous learning. We draw inspiration from the local vernacular,

interpreting heritage, culture, and regional characteristics to develop concepts and aesthetics that respect and complement their surroundings.

Leading the way: PBA is at the forefront of some of the world's most ambitious future projects, tackling large-scale developments with significant social impact for high-profile clients. We actively research design trends, technology, and best practices worldwide, striving to be recognized leaders in shaping the future of design.

OUR SERVICES

- Masterplanning
- Architecture
- Interior Design
- Landscape Design
- Lighting Design
- Visualizations
- BIM Services
- Technical Advisory

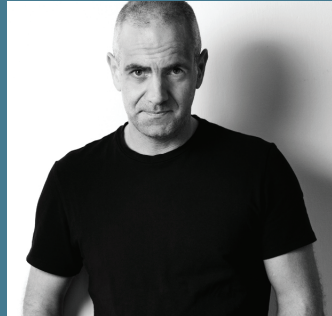
OUR SECTORS

- Masterplans
- Hospitality
- Residential
- Education
- Entertainment
- Cultural
- Commercial & Offices
- Industrial
- Infrastructure
- Religious



Michel GEORR
General Manager

20 years' Experience in international Real Estate Investments and large developments.



Youssef MALLAT
Co-founder of Plan Bee Architecture

Central to developing the firm's project portfolio, reputation, and consultant network



Ibrahim BERBERI
Co-founder of Plan Bee Architecture

With a background in design and project management, he oversees the execution of high-profile projects



Roland RIZKALLAH
*Deputy General Manager
Business Development*

Co-founder of Plan Bee Architecture with over 20 year's experience, leading projects and teams across Europe, Asia and the Middle East.



Anthony CHEMALY
*Head of Architecture
Head of BIM Department*

Goal-Driven leader with more than 15 years of experience, leading large teams and complex projects.



Alexia SARKIS
*Head of Interior Design
Human Resources*

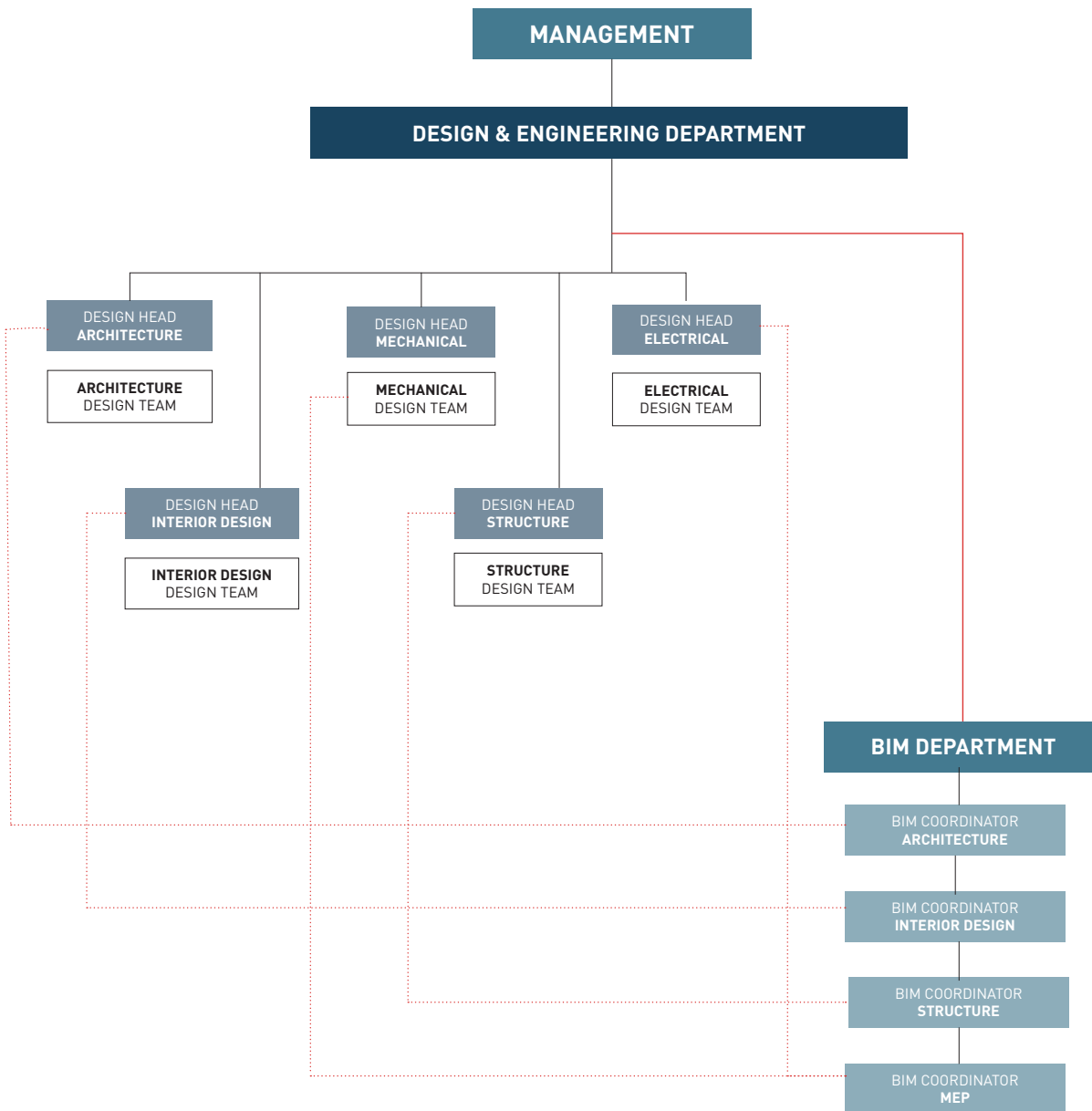
Over 20 year's experience, leading international large-scale projects.



Rana ABBOUD
Lead Architect

Joining Plan Bee in 2022, Rana manages private residential & cultural projects in EMEA

Team Structure





ARCHITECTS

**INTERIOR
DESIGNERS**

**LANDSCAPE
ARCHITECTS**

**MEP
ENGINEERS**

**STRUCTURAL
ENGINEERS**

**INFRASTRUCTURE
ENGINEERS**

Our Commitment & Core Principles

Our core principles guide us in our work to achieve exceptional results in any context

Ensuring the spirit and intent of a project remain central throughout its lifecycle is paramount at PBA. This is why we've established core principles and commitments that form the framework for achieving our vision and mission.

EVIDENCE-BASED DESIGN

- > We follow best practices and learn from research and data to create effective designs.
- > We utilize the client's data and evidence to inform the design process.

USER-CENTERED FACILITIES

- > User experience is at the heart of our design philosophy.
- > We create inviting, comfortable, and inclusive environments that adapt to diverse needs.
- > Design features promote health, well-being, and cater to regional considerations.

FORWARD-THINKING APPROACH

- > We minimize environmental impact through sustainable design, construction, and operation.
- > We embrace cutting-edge technology and innovative solutions.
- > We stay informed about design trends and disruptive advancements. We consider the project's life cycle impact.

RESOURCE EFFICIENCY

- > We cultivate partnerships that enhance project effectiveness and efficiency.
- > We prioritize cost-effectiveness and optimize resource utilization.
- > We leverage technology to further streamline processes.
- > We maximize space usage through efficient design and shared functionality.
- > We ensure seamless service integration to optimize performance.

INTEGRATED SERVICE DELIVERY

- > We adhere to a holistic approach by providing comprehensive services.
- > Our one-stop-shop team fosters seamless collaboration throughout the project lifecycle.
- > We maintain open communication and collaboration with clients and stakeholders.

LEADING-EDGE R&D

- > We invest in integrated resources for knowledge-sharing and innovation.
- > We promote effective knowledge transfer through technology, services, and training.
- > Continuous learning and development are core values at PBA.
- > We strive to produce new knowledge and cultivate talent through ongoing training.
- > Our professional development fosters quality improvement, innovation, and optimal results.
- > We are committed to remaining at the forefront of research and development.

ADDING VALUE AND PURSUING EXCELLENCE

- > We adopt best practices and constantly strive to be the best in our field.
- > We embrace new ideas and creative solutions that add value.
- > Each decision is made objectively to maximize return on investment.
- > We prioritize the user experience and pursue the project vision with dedication.
- > We continuously strive to maximize the project's value and potential.

This framework ensures that every project we undertake reflects our commitment to excellence and user-centric design.



02.

Our

Knowledge

Design Process

New technologies and tools are rapidly transforming the design landscape. They're not just streamlining the design process; they're actively shaping the final outcome in exciting ways.

Conventional

TRADITIONAL 2D DOCUMENTATION PROCESS, NON-INTEGRATED DESIGN PROCESSES

- > Time Consuming;
- > Design changes require manual update in all documents;
- > Prone to error and uncoordinated design

BIM 3D / 4D / 5D / 6D

Building Information Modeling.
Virtual Construction of the building.

BIM 3D

- > Elements represent physical objects;
- > Integrated documentation process;
- > Live Clash detection, information model

BIM 4D

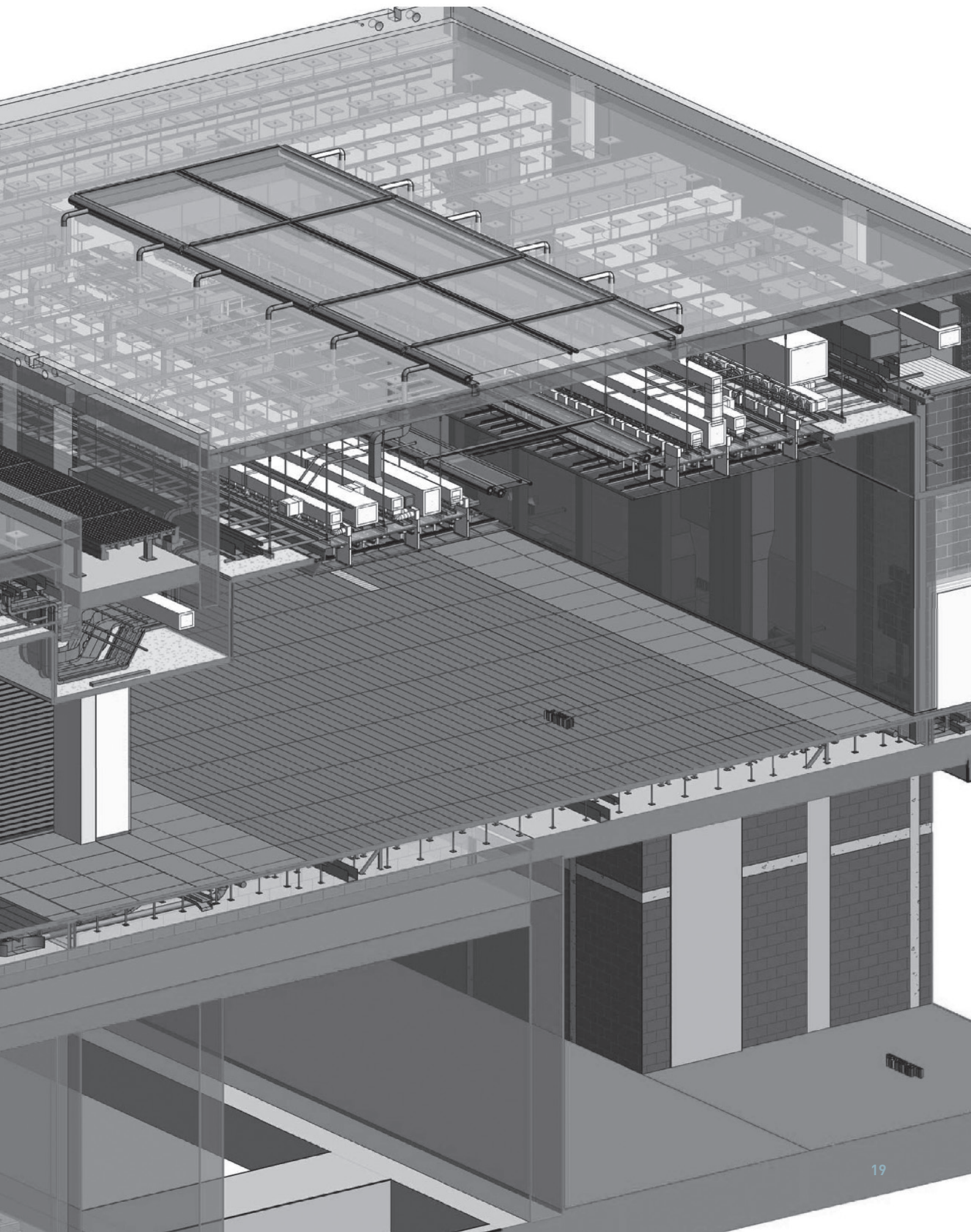
- > Construction sequence and time;
- > Site planning;
- > Building Feasibility studies

BIM 5D

- > Preview capital cost (acquisition);
- > Anticipate running costs (maintenance);
- > Anticipate Replacement costs

BIM 6D

- > Project life-cycle info management;
- > Facilities management data



Design Process

SOFTWARE EVALUATION

Committed to research and development, we test and evaluate the latest software as they are released, ensuring we are able to harness advancements and provide our clients with the best solution that meets their needs.

Network: Our workstations in Lebanon are equipped with the latest computer models and servers have proper back-up system.

Backups: Software updates are regularly applied to the workstations and the efficiency of the servers is kept in mind. Uninterrupted Internet Service and secure data and voice network ensure communication between employees and clients. Back-up generators provide power during emergency.

Softwares: PBA works on all major software applications: Revit – Autocad – Navisworks – 3DS Max – BIM 360 – etc...

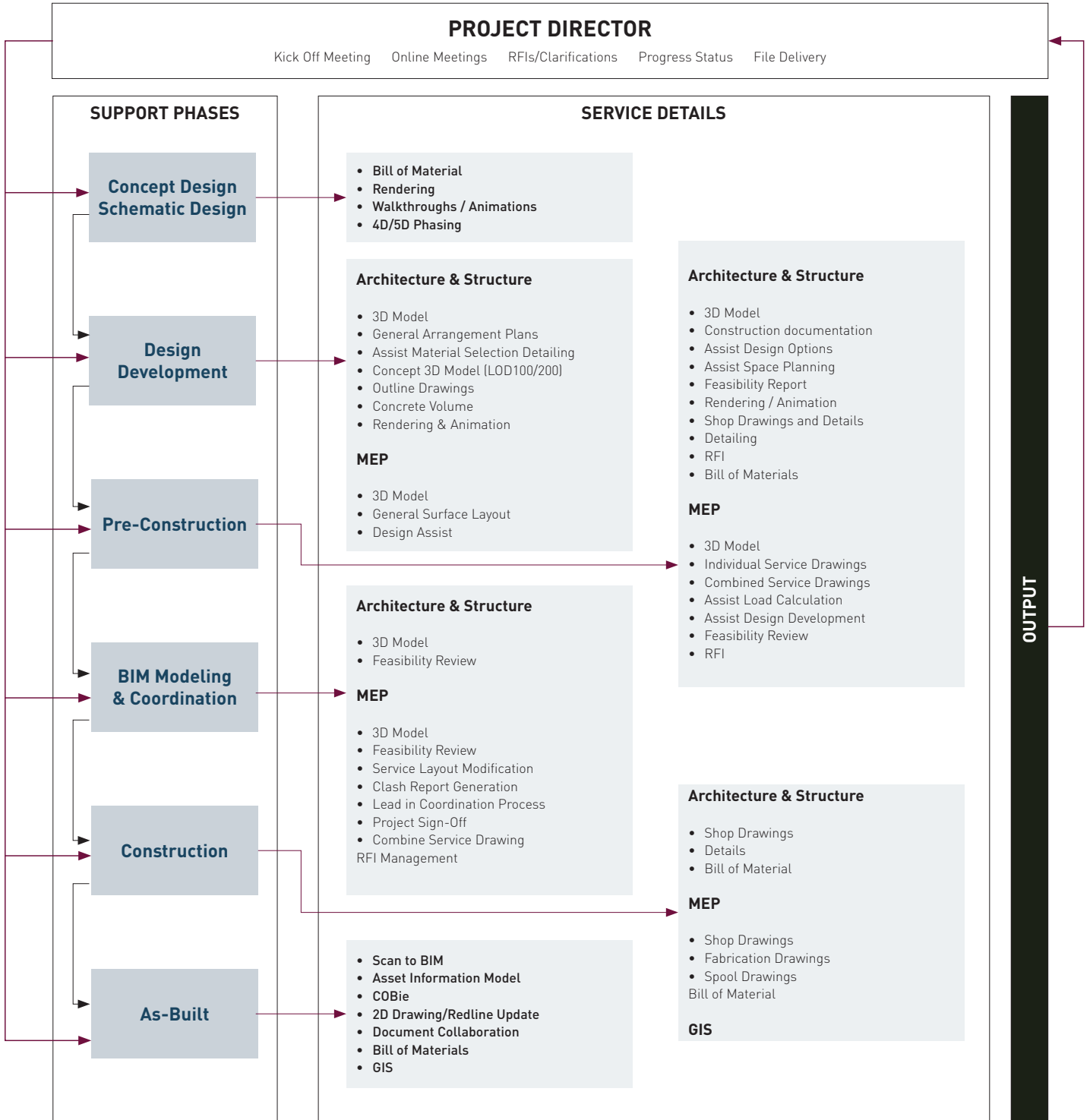


Work Process

To create an efficient process and to release the full potential and knowledge of the client, consultants and other stakeholders it is important to create a collaborative, open forum for discussions and decision-making.

CLIENTS

Real Estate Developers / Owners / Architects
/ Engineers / General Contractors / Sub-
Contractors



03.
**Our
Clients**

Our Clients



YTAA Youssef Tohme Architects and Associates



MZ ARCHITECTS

CHAFIK STUDIO
ARCHITECTURE DESIGN INNOVATION



COOL INC



and
STUDIO



INTERNATIONAL
L'INGÉNIERIE DE LA CONSTRUCTION

global art **G**
Office & Home Furniture Interior Design & Projects W.L.L.

SUD



SSH

04.

Selected Projects

BUJAIRY CAR PARK

Diriyah, Saudi Arabia
2021

Client: NESMA Partners
Size: 65,000 sq.m.
Year: 2021

SCOPE

Schematic
Design Development
IFC
Shop Drawings
As Built Drawings

BIM

BIM Management
LOD 300
LOD 400
LOD 500

DISCIPLINE

Architecture
Interior Design
MEP
Structure
Landscape
Master Planning



MINISTRY OF CULTURE

Diriyah, Saudi Arabia
2023

Client: SSH
Size: 75,000 sq.m.
Year: 2023

SCOPE

Schematic
Design Development
IFC
Shop Drawings
As Built Drawings

BIM

BIM Management
LOD 300
LOD 400
LOD 500

DISCIPLINE

Architecture
Interior Design
MEP
Structure
Landscape
Master Planning



TERRACES

F&B

Diriyah, Saudi Arabia
2020

Client: ARAIL
Size: 20,000 sq.m.
Year: 2020

SCOPE

Schematic
Design Development
IFC
Shop Drawings
As Built Drawings

BIM

BIM Management
LOD 300
LOD 400
LOD 500

DISCIPLINE

Architecture
Interior Design
MEP
Structure
Landscape
Master Planning



AL ULA SOCIAL HABILITATION CENTRE

Al Ula, Saudi Arabia
2023

Client: SSH
Size: 20,000 sq.m.
Year: 2023

SCOPE

Concept Design
Schematic
Design Development
IFC
Shop Drawings
As Built Drawings

DISCIPLINE

Architecture
Interior Design
MEP
Structure
Landscape
Master Planning

BIM

BIM Management
LOD 300
LOD 400
LOD 500



RUA AL MADINA - DISTRICT 9A CLUSTER 2

Al Madinah al Munawwarah, Saudi Arabia

Client: Confidential
Size: 78,900 sq.m.
Year: 2023

SCOPE

Concept Design
Schematic
Design Development
IFC
Shop Drawings
As Built Drawings

DISCIPLINE

Architecture
Interior Design
MEP
Structure
Landscape
Master Planning

BIM

BIM Management
LOD 300
LOD 400
LOD 500



DATA CENTER

France
2023

Architects: DK Architectes
Client: DK Architectes
Year: 2023

SCOPE

Concept Design
Schematic

Design Development

IFC

Shop Drawings
As Built Drawings

BIM

BIM Management

LOD 300

LOD 400

LOD 500

DISCIPLINE

Architecture

Interior Design

MEP

Structure

Landscape

Master Planning



KKIA INTEGRATED LOGISTICS BONDED ZONE

Riyadh, Saudi Arabia
2021

Client: DG JONES
Size: 30,000 sq.m.
Year: 2021

SCOPE

Concept Design
Schematic
Design Development
IFC
Shop Drawings
As Built Drawings

BIM

BIM Management
LOD 300
LOD 400
LOD 500

DISCIPLINE

Architecture
Interior Design
MEP
Structure
Landscape
Master Planning



MAYDAN SAYYED AL SHOUHADAA'

Al Medina, Saudi Arabia
2020

Client: SUD ARCHITECTES
Size: 30,000 sq.m.
Year: 2020
Status: Competition Won

SCOPE

Concept Design
Schematic
Design Development
IFC
Shop Drawings
As Built Drawings

DISCIPLINE

Architecture
Interior Design
MEP
Structure
Landscape
Master Planning

BIM

LOD 200
LOD 300
LOD 400
LOD 500



NANTES METROPOL HABITAT LA CANOPEE

Nantes, France
2017

Architect: YTAA
Client: VINCI - SOGEA
Size: 16,000 sqm
Year: 2017

SCOPE

Concept Design
Schematic
Design Development
IFC
Shop Drawings
As Built Drawings

DISCIPLINE

Architecture
Interior Design
MEP
Structure
Landscape
Master Planning

BIM

LOD 200
LOD 300
LOD 400
LOD 500



BERRO'S BISTROT

Cairo, Egypt
2023

Client: Berro
Size: 350 sqm
Year: 2023

SCOPE

Concept Design
Schematic
Design Development
IFC
Shop Drawings
As Built Drawings

BIM

LOD 200
LOD 300
LOD 400
LOD 500

DISCIPLINE

Architecture
Interior Design
MEP
Structure
Landscape
Master Planning



BIANCA RESTAURANT

Via Riyadh, Saudi Arabia
2023

Client: Sela | SUD Architectes
Size: 6,000 sqm
Year: 2021-2023

SCOPE

Concept Design
Schematic
Design Development
IFC
Shop Drawings
As Built Drawings

DISCIPLINE

Architecture
Interior Design
MEP
Structure
Landscape
Master Planning

BIM

LOD 200
LOD 300
LOD 400
LOD 500



RAOUL'S RESTAURANT

Via Riyadh, Saudi Arabia
2023

Client: Sela | SUD Architectes
Size: 6,000 sqm
Year: 2021-2023

SCOPE

Concept Design
Schematic
Design Development
IFC
Shop Drawings
As Built Drawings

DISCIPLINE

Architecture
Interior Design
MEP
Structure
Landscape
Master Planning

BIM

LOD 200
LOD 300
LOD 400
LOD 500



CLUB HOUSE

Saudi Arabia
2022

Client: Private
Size: N/A
Year: 2022

SCOPE

Concept Design
Schematic
Design Development
IFC
Shop Drawings
As Built Drawings

DISCIPLINE

Architecture
Interior Design
MEP
Structure
Landscape
Master Planning

BIM

LOD 200
LOD 300
LOD 400
LOD 500



ST REGIS - ASSOUFID

Morocco
2018

Client: SSH
Size: 35,000 sqm
Year: 2018

SCOPE

Concept Design
Schematic
Design Development
IFC
Shop Drawings
As Built Drawings

DISCIPLINE

Architecture
Interior Design
MEP
Structure
Landscape
Master Planning

BIM

LOD 200
LOD 300
LOD 400
LOD 500



METROPOLE PALACE MONACO

Monaco
2004

Client: Private
Size: N/A
Year: 2004

SCOPE

Concept Design
Schematic
Design Development
IFC
Shop Drawings
As Built Drawings

BIM

LOD 200
LOD 300
LOD 400
LOD 500

DISCIPLINE

Architecture
Interior Design
MEP
Structure
Landscape
Master Planning



LA SORBONNE UNIVERSITY

Abu Dhabi, United Arab Emirates
2010

Client: Oger International
Size: 50,000 sqm
Year: 2010

SCOPE

Concept Design
Schematic
Design Development
IFC
Shop Drawings
As Built Drawings


DISCIPLINE

Architecture
Interior Design
MEP
Structure
Landscape
Master Planning

BIM

LOD 200
LOD 300
LOD 400
LOD 500





PBA | Plan Bee Architecture

BEIRUT

Urban Dreams Bldg - Block C - 6th Floor
Corniche El Nahr, Pierre Gemayel Street
SOHO Beirut, Lebanon

T +961 21 423 885

T +961 21 423 775

E info@planbeearchitecture.com

www.planbeearchitecture.com



