

Plan Bee Architecture



**We are a
Dynamic-based
Architecture & Interior
Design Firm**





Plan Bee Architecture
is a forward-thinking and
contemporary collective of
architects **dedicated to the**
realm of architecture and
design, spanning from individual
buildings to public spaces and
large-scale urban planning.

Established in 2008, **Plan Bee Architecture** offers an extensive array of services covering Architecture, Interior Design, Landscaping, and Engineering. Our design philosophy revolves around the integration of innovation, quality, and collaborative teamwork.

Our services include:

- Architecture
- Landscape Architecture
- Interior Design
- Engineering

At Plan Bee, we place a premium on comprehending our clients' needs and customizing our designs to precisely align with their requirements. Our consultancy services span a broad spectrum of specialized areas, encompassing the delivery of schematic designs, tender documents, execution drawings, and on-site supervision.

As a BIM Certified Team, we possess the capability to produce fully detailed BIM Models utilizing Autodesk® Revit®. We collaborate closely with consultants, contractors, and developers to meet their EPC obligations and provide comprehensive engineering support across the project lifecycle.



How / What we do

We / People / Studio

Work / Commercial / Hospitality /
Industrial / Interior Design / Mixed-Use
/ Residential / Retail

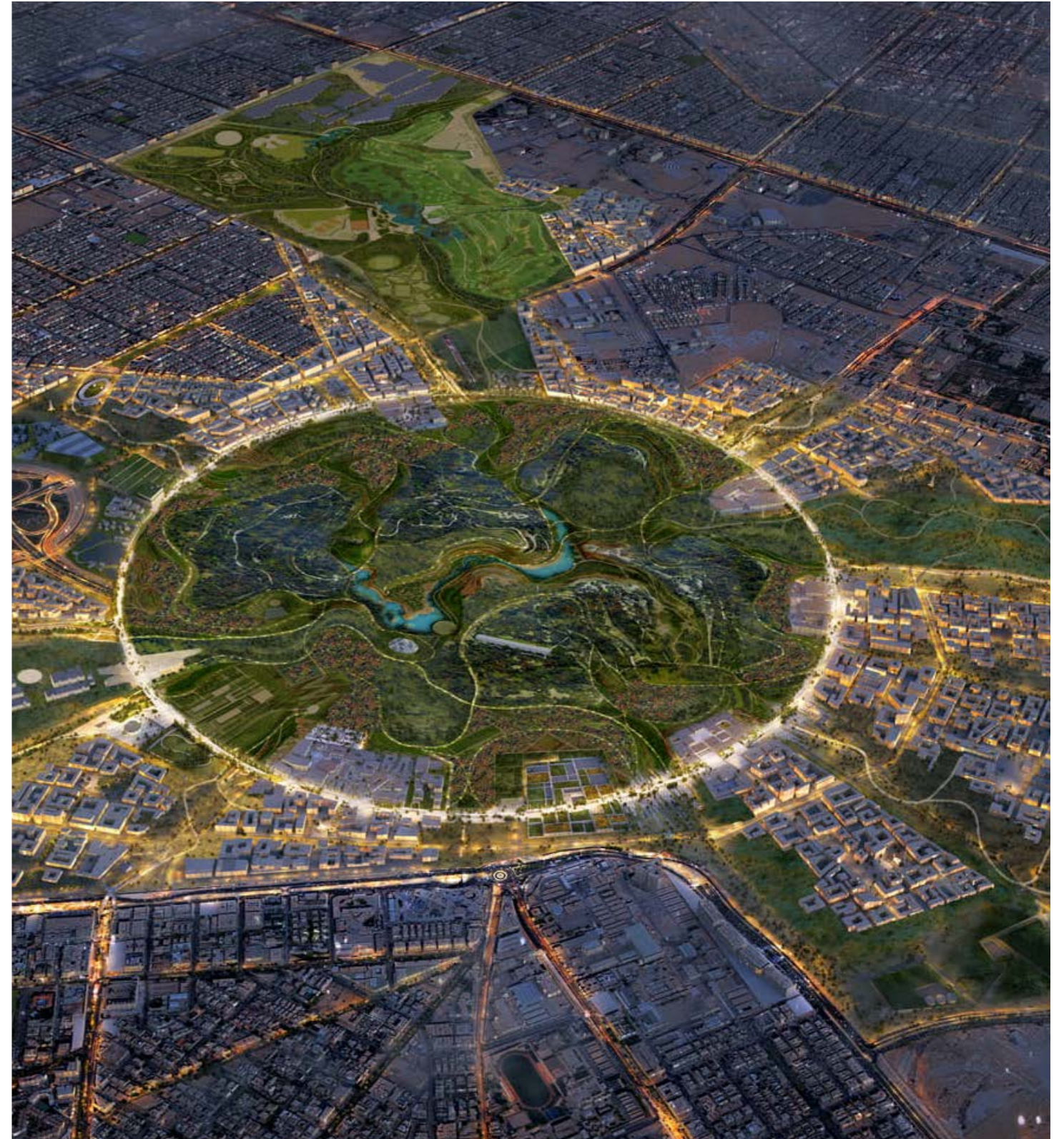


How



Cutting-edge:
others claim it.
We live it.

Plan Bee Architecture embraces change. We leverage our collective talents to implement the technological advancements of our industry into practice.





WHAT WE DO

Simplify, Streamline, Succeed: Our One-Stop Shop Advantage

OUR SERVICES

- Masterplanning
- Architecture
- Interior Design
- Landscape Design
- Lighting Design
- Visualizations
- BIM Services
- Technical Advisory

OUR SECTORS

- Masterplans
- Hospitality
- Residential
- Education
- Entertainment
- Cultural
- Commercial & Offices
- Industrial
- Infrastructure
- Religious

A Diverse Team. Global Reach. Exceptional Results.

Plan Bee Architects (PBA) is a Beirut-based design firm with a multi-disciplinary team of specialists. We serve a diverse portfolio of projects spanning Europe, the Middle East, and Africa.

Our One-Stop Shop Advantage:

We offer an integrated approach, bringing together a carefully curated team of experts across various design and development services. This allows us to provide seamless solutions for complex projects, regardless of market or stage.

Beyond Good Work, We Deliver Exceptional Solutions:

Our philosophy goes beyond simply delivering good work. We take the time to understand your unique needs and context. Through a collaborative partnership, we create personalized solutions that exceed your expectations.

Your Success is Our Success:

We measure our success by yours. Our team's expertise provides strategic insights in design, operation, and investment, allowing us to deliver tangible results that enhance your competitive advantage and bottom line.



OUR VISION

Our vision is to inform the future evolution of design

- By striving for excellence;
- By aspiring to be recognized leaders in our field;
- By facilitating our clients' utmost success

OUR MISSION

Our mission is to exceed our clients aspirations

- To create unique, tailor made solutions;
- To work in partnership with our clients;
- To provide culturally sensitive solutions;
- To achieve sustainable, high quality results

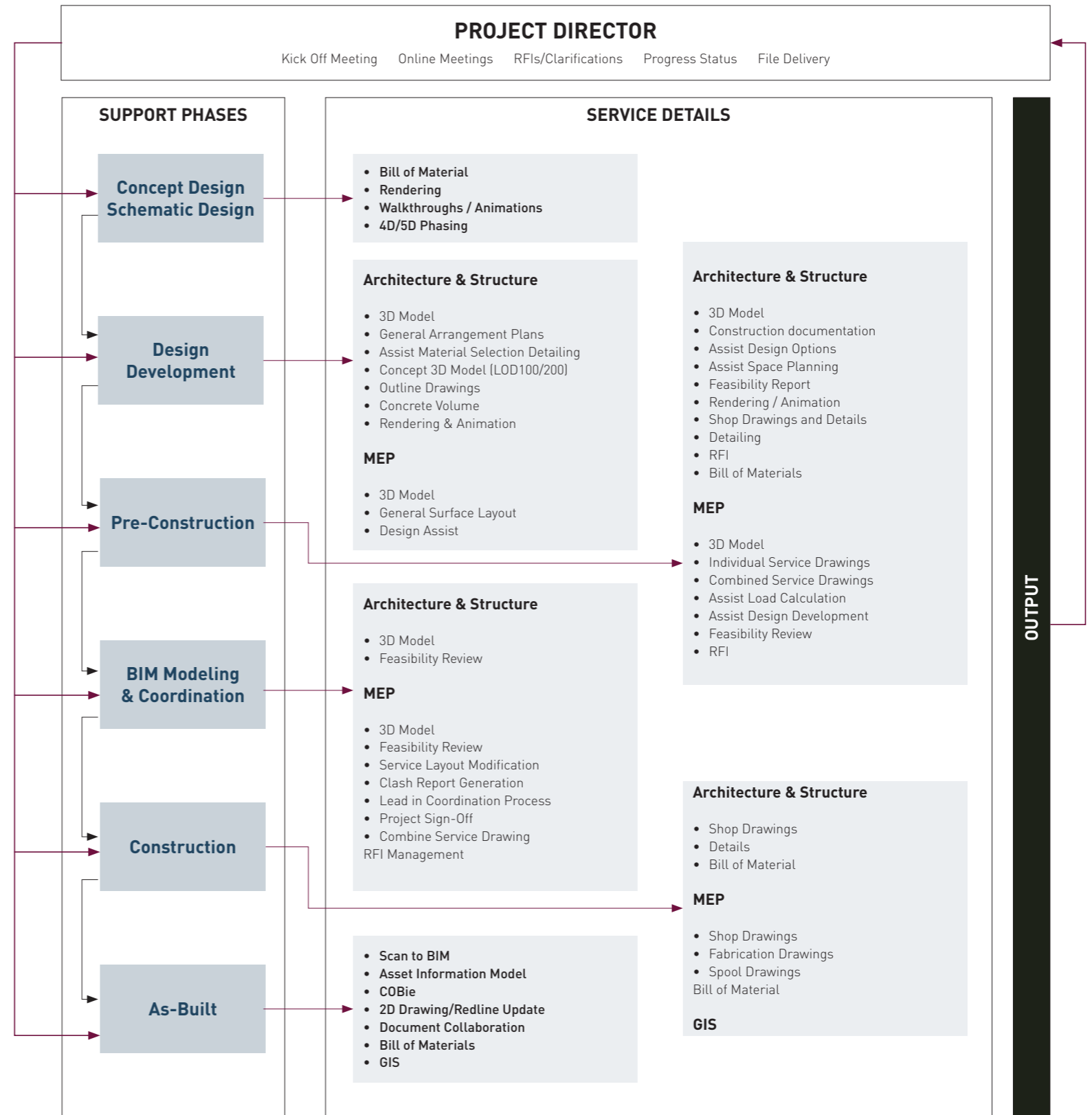
WORK PROCESS



To create an efficient process and to release the full potential and knowledge of the client, consultants and other stakeholders it is important to create a collaborative, open forum for discussions and decision-making.

CLIENTS

Real Estate Developers
/ Owners / Architects
/ Engineers / General
Contractors / Sub-
Contractors

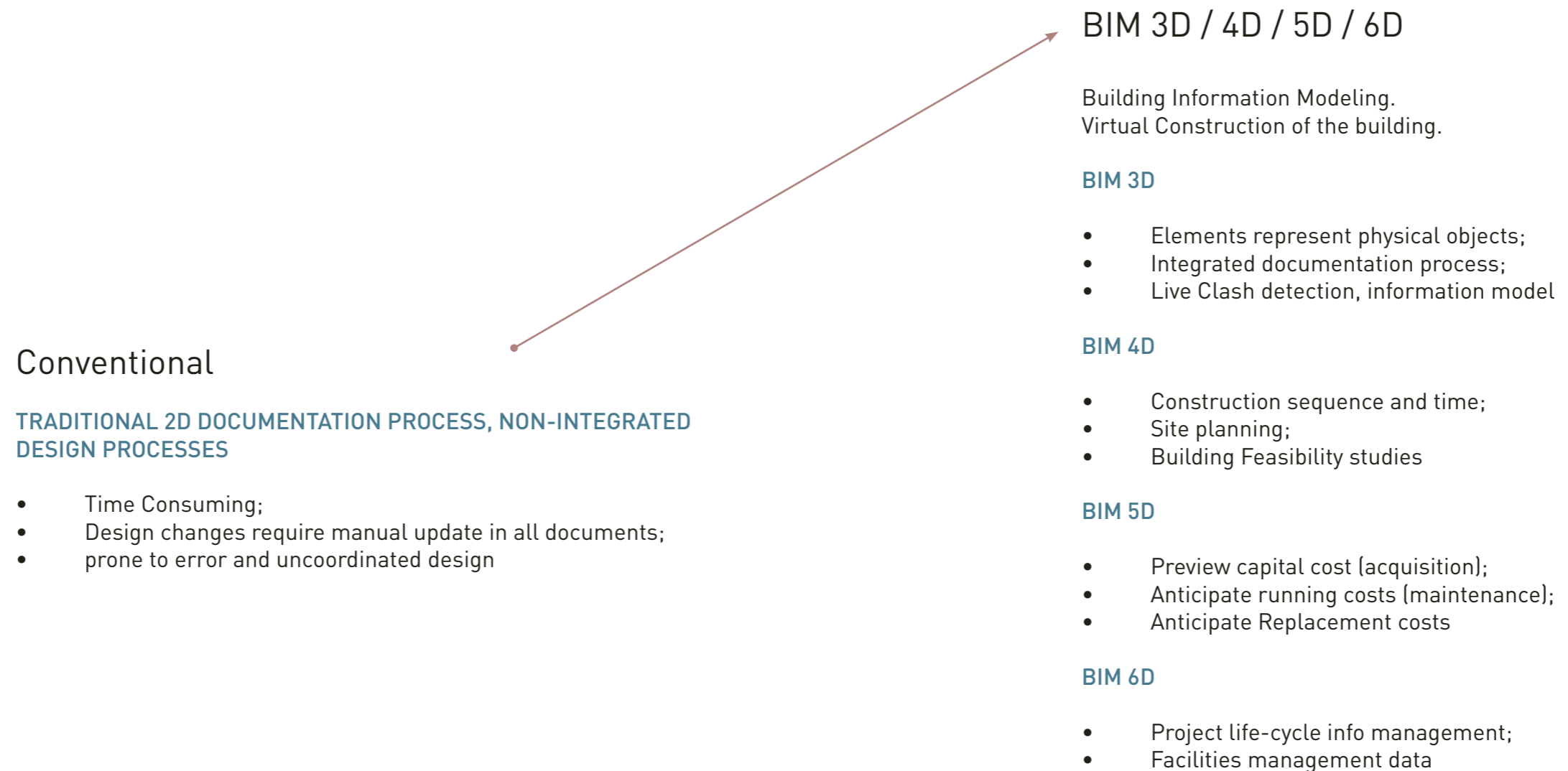


OUTPUT

DESIGN PROCESS



New technologies and tools are rapidly transforming the design landscape. They're not just streamlining the design process; they're actively shaping the final outcome in exciting ways.



DESIGN PROCESS

SOFTWARE EVALUATION



Committed to research and development, we test and evaluate the latest software as they are released, ensuring we are able to harness advancements and provide our clients with the best solution that meets their needs.

Network: Our workstations in Lebanon are equipped with the latest computer models and servers have proper back-up system.

Backups: Software updates are regularly applied to the workstations and the efficiency of the servers is kept in mind. Uninterrupted Internet Service and secure data and voice network ensure communication between employees and clients. Back-up generators provide power during emergency.

Softwares: PBA works on all major software applications: Revit – Autocad – Navisworks – 3DS Max – BIM 360 – etc...





WE

PARTNERS



Youssef MALLAT

Co-founder of Plan Bee Architecture

Central to developing the firm's project portfolio, reputation, and consultant network



Michel GEORR

Co-founder of Plan Bee Architecture

20 years' Experience in international Real Estate Investments and large developments.



Ibrahim BERBERI

Co-founder of Plan Bee Architecture

With a background in design and project management, he oversees the execution of high-profile projects



Roland RIZKALLAH

Co-founder of Plan Bee Architecture

Co-founder of Plan Bee Architecture with over 20 year's experience, leading projects and teams across Europe, Asia and the Middle East.



Anthony CHEMALY

Goal-Driven leader with more than 15 years of experience, leading large teams and complex projects.



Alexia SARKIS

Over 20 year's experience, leading international large-scale projects.

PLAN BEE contribution is made possible with the key players of the management team. We are poised to deliver the best design and engineering solutions to clients by nurturing and maintaining the highest level of innovation, commitment, productivity, and quality.

MANAGEMENT & ORGANIZATION



PLAN BEE is led by a management team consisting of General Director Michel Georr, Managing Director Roland Rizkallah, Department Directors Alexia Sarkis and Anthony Chemaly. Together, they are responsible for the company's overall development and strategic long-term goals.

Depending on the type and scale of the project, projects are developed in teams, made up of a mix of a Project Manager, and senior architects, projects architects, design architects, landscape architects, constructing architects and junior architects, all led by a Project Director. Cross-disciplinary teamwork is central in our working method and each project team cooperates with a wide range of external experts in order to obtain the best opportunities and potentials towards finding innovative solutions in each particular project.

KEY PEOPLE



Michel GEORR

General Manager

20 years' Experience in international Real Estate Investments and large developments.

Michel GEORR boasts a multifaceted career, blending his architectural expertise with a keen eye for business development. Since co-founding 109architectes in 2002, he has played a pivotal role in driving growth. In 2023, he took the helm as General Manager of Plan Bee Architecture, leading the firm's expansion and financial success while fostering a loyal and motivated team through a customized reward system.

Michel's diverse background spans over two decades, from leading large-scale projects as a senior architect at Basile, Homsy & Associates to navigating the complexities of international real estate with the Saradar Group as Chairman, CEO, Board Member and Advisor to the Board. This experience across ventures, funds, and companies across the MENA region, Europe, and the US gives him a unique global perspective.

His impressive academic credentials, including an Executive MBA from INSEAD, France-Singapore (2006) and an MBA from ESCP-EAP, Paris and Beirut (1999), combined with a dedication to lifelong learning through executive education programs, solidify him as a leader at the forefront of the architecture and business landscape.



Roland RIZKALLAH

*Deputy General Manager
Business Development*

Co-founder of Plan Bee Architecture with over 20 year's experience, leading projects and teams across Europe, Asia and the Middle East.

Roland, a co-founder of Plan Bee Architecture, served as Managing Partner from 2008 to September 2023. He's a client-oriented team player with over 20 years of project management experience and a passion for innovation. His leadership was instrumental in growing the company to over 50 members and implementing a BIM (Building Information Modeling) environment since 2017. Roland's expertise extends beyond Plan Bee. Since 1999, he's been a Partner and Technical Advisor for a family design-build construction unit. He also held a similar role with a real estate developer from 2013 to 2020, leading numerous residential, mixed-use, and industrial projects.

Roland's impressive portfolio includes international large-scale projects like Red Sea projects, Dariyah projects, Louvre Abu Dhabi museum, and St Regis Hotel Assoufid Marrakech, showcasing his ability to manage complex, multinational endeavors. His dedication to continuous learning is evident in his participation in international seminars on BIM, sustainability, and project management. Roland's academic background includes a degree in Engineering Sciences from Jussieu Paris VI and a Master's degree in Architecture (with honors). His qualifications, combined with his diverse experience, solidify him as a valuable asset in the architecture and construction industry.

KEY PEOPLE



Anthony CHEMALY

*Head of Architecture
Head of BIM Department*

Goal-Driven leader with more than 15 years of experience, leading large teams and complex projects.

Leveraging extensive experience across all project phases – from design to as-built documentation – Anthony brings a wealth of knowledge to Plan Bee Architecture (since 2017). Previously with 109 Architectes and other renowned firms, he played a key role in building the firm's BIM team and enhancing their technical capabilities. Anthony's versatility shines through his expertise in communication, architectural design, detailing, IT, and international standards. He leads multi-disciplinary coordination within BIM environments, adeptly managing Plan Bee's large-scale projects.

Holder of a Master Degree in Architecture (2003) and a Master Degree in Urban Planning (2005), Anthony's previous professional experience is fostered through several national and international firms, working on variable projects ranging from individual homes and residential buildings, restoration of old monuments, Hotels, Hospitals, Shopping Malls, Museums and Public buildings to Urban planning and Interventions on old cities.



Alexia SARKIS

*Head of Interior Design
Human Resources*

Over 20 year's experience, leading international large-scale projects.

Alexia, a seasoned interior designer with 24 years of experience crafting large-scale projects, brings a global perspective to Plan Bee Architecture. Having honed her skills in France and across 20+ countries, she's tackled versatile projects – from hotels and palaces to head offices and restaurants. Her expertise extends to spa design, where she's become a sought-after consultant.

Since returning to Lebanon in 2016, Alexia leads Plan Bee's Interior Design Department, fostering a collaborative environment where diverse talents combine to deliver numerous international projects annually. She champions an intuitive and conceptual approach, always emphasizing design excellence and adherence to client requirements. Recognizing her invaluable contributions, Alexia became a Partner at Plan Bee Architecture in 2024. With a Master's degree in Interior Design from ALBA (2000), she's a valuable asset to the firm.



Rana ABBOUD

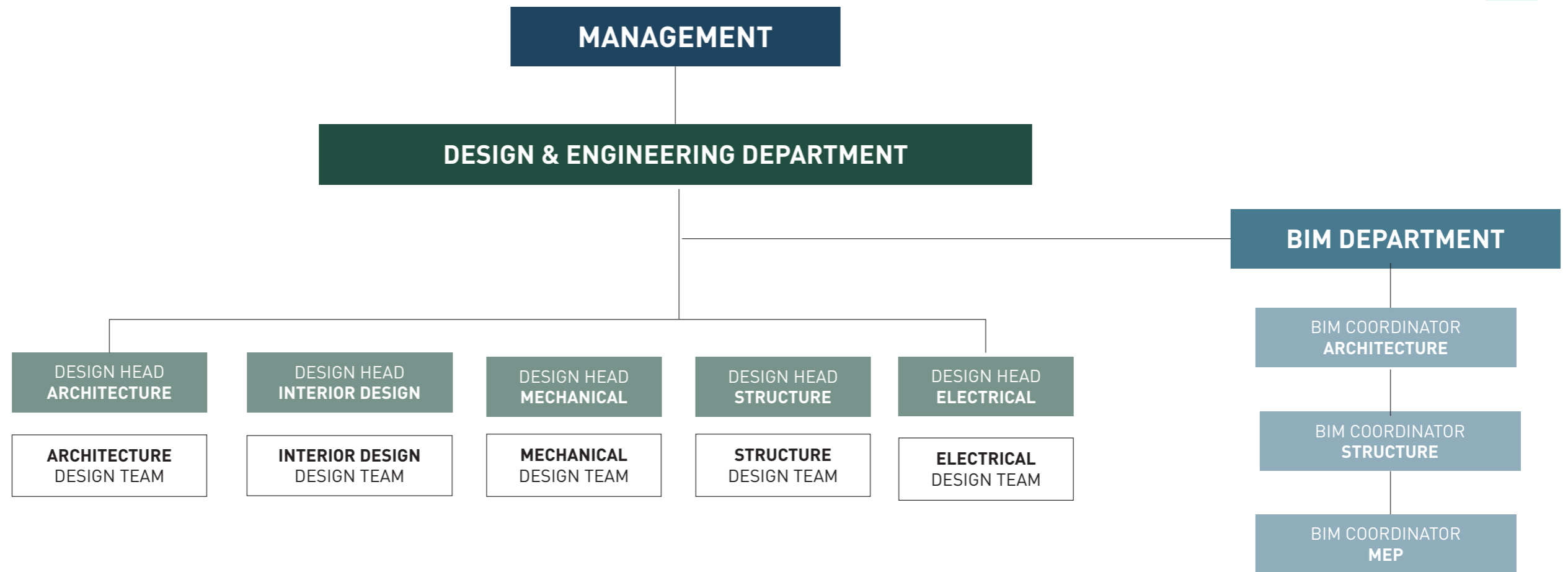
Lead Architect

Joining Plan Bee in 2022, Rana manages private residential & cultural projects in EMEA

Architect and self-taught artist Rana brings a unique blend of design expertise and artistic vision to Plan Bee Architecture (since 2022). Based in Beirut, her passion for colors blossomed into a thriving art practice alongside her architectural career. Rana leads and coordinates private residential and cultural projects abroad, managing teams of architects across various scales – from homes to mixed-use buildings.

Prior to Plan Bee, she honed her skills in a private consultancy firm, handling design and project management for diverse projects like residential buildings, malls, cinemas, and offices. This experience, coupled with her Master's degree from INBA (2009), equips her to excel in both architectural and artistic realms. Her paintings, showcased in Lebanese galleries like Bet Beirut, reflect a contemporary style and serve as an escape to fantastical worlds she creates. This artistic sensibility undoubtedly influences her architectural approach, making Rana a valuable asset to the firm.

TEAM STRUCTURE





CLIENTS

INASCO

MAN
ENTERPRISE

SAUDI OGER LTD.

YTAA Youssef Tohme Architects
and Associates



TECMAN

NESMA
UNITED INDUSTRIES

MZ ARCHITECTS

CHAFIK STUDIO
ARCHITECTURE DESIGN INNOVATION

medica

ACC
ARABIAN CONSTRUCTION CO.

Nesma
& Partners نسما
وشركاهم

Rafik El-Khoury & Partners
Consulting Engineers SAL

COOL
INC

ALEC
Building Excellence

SANJOSE
CONTRACTING

INTERNATIONAL
L'INGÉNIERIE DE LA CONSTRUCTION

and
STUDIO

ZADEA

ALMAJAL ALARABI
GROUP

SUD

global art
Office & Home Furniture Interior Design & Projects W.L.L.

شركة الأريل المقاولات و الصناعة المحدودة
ARAIL CONSTRUCTION & INDUSTRIAL CO. LTD

دار العمران
DAR AL OMRAN

SSH



WORK
ARCHITECTURE

DIRIYAH

SAUDI ARABIA



MINISTRY OF CULTURE

Location: Diriyah, Saudi Arabia
Program: Governmental Building



Client: SSH
Size: 75,000 sq.m.
Year: 2023

SCOPE

Schematic
Design Development
IFC
Shop Drawings
As Built Drawings

DISCIPLINE

Architecture
Interior Design
MEP
Structure
Landscape
Master Planning

BIM

BIM Management
LOD 300
LOD 400
LOD 500



SAMHAN CAR PARK

Location: Diriyah, Saudi Arabia
Program: 5 Stories Car Park



Client: Nesma Partners
Size: 65,000 sq.m.
Year: 2023

SCOPE

Schematic
Design Development
IFC
Shop Drawings
As Built Drawings

DISCIPLINE

Architecture
Interior Design
MEP
Structure
Landscape
Master Planning

BIM

BIM Management
LOD 300
LOD 400
LOD 500



BUJAIRY CAR PARK

Location: Diriyah, Saudi Arabia
Program: 4 Stories Car Park



Client: NESMA Partners
Size: 65,000 sq.m.
Year: 2021

SCOPE

Schematic
Design Development
IFC
Shop Drawings
As Built Drawings

DISCIPLINE

Architecture
Interior Design
MEP
Structure
Landscape
Master Planning

BIM

BIM Management
LOD 300
LOD 400
LOD 500



TERRACES F&B

Location: Diriyah, Saudi Arabia
Program: Hospitality



Client: ARAIL
Size: 20,000 sq.m.
Year: 2020

SCOPE

Schematic
Design Development
IFC
Shop Drawings
As Built Drawings

DISCIPLINE

Architecture
Interior Design
MEP
Structure
Landscape
Master Planning

BIM

BIM Management
LOD 300
LOD 400
LOD 500



AL ULA
SOCIAL HABILITATION CENTRE
SAUDI ARABIA



AL ULA SOCIAL HABILITATION CENTRE

Location: Al Ula, Saudi Arabia
Program: Building

Client: SSH
Size: 20,000 sq.m.
Year: 2023

SCOPE

Concept Design
Schematic
Design Development
IFC
Shop Drawings
As Built Drawings

DISCIPLINE

Architecture
Interior Design
MEP
Structure
Landscape
Master Planning

BIM

BIM Management
LOD 300
LOD 400
LOD 500



RUA AL MADINA

SAUDI ARABIA



RUA AL MADINA - DISTRICT 9A CLUSTER 2

Location: Al Madinah al Munawwarah, Saudi Arabia
Program: Hospitality Building

Client: Confidential
Size: 78,900 sq.m.
Year: 2023

SCOPE

Concept Design
Schematic
Design Development
IFC
Shop Drawings
As Built Drawings

DISCIPLINE

Architecture
Interior Design
MEP
Structure
Landscape
Master Planning

BIM

BIM Management
LOD 300
LOD 400
LOD 500



DUNNY DATA CENTER

FRANCE



DUNNY DATA CENTER

Location: France
Program: Building



Architects: DK Architectes
Client: DK Architectes
Size:
Year: 2023

SCOPE

Concept Design
Schematic
Design Development
IFC
Shop Drawings
As Built Drawings

DISCIPLINE

Architecture
Interior Design
MEP
Structure
Landscape
Master Planning
Infrastructure

BIM

BIM Management
LOD 300
LOD 400
LOD 500



FOUR SEASONS HOTEL

SAUDI ARABIA



FOUR SEASONS HOTEL

Location: Jeddah, Saudi Arabia
Program: Hotel



Client: HAVELOCK ONE
Size: 50,000 sq.m.
Year: 2023

SCOPE

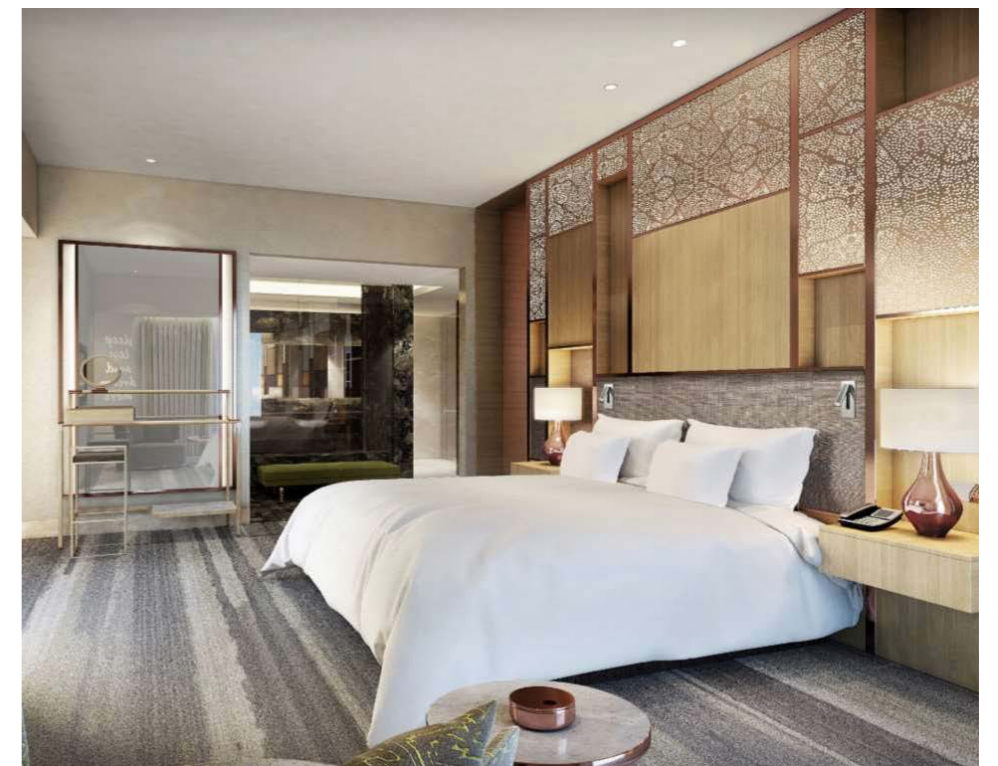
Concept Design
Schematic
Design Development
IFC
Shop Drawings
As Built Drawings

DISCIPLINE

Architecture
Interior Design
MEP
Structure
Landscape
Master Planning
Infrastructure

BIM

BIM Management
LOD 300
LOD 400
LOD 500



MISK SCHOOL

SAUDI ARABIA



MISK SCHOOL

Location: Riyadh, Saudi Arabia
Program: Kindergarten & Sports Complex



Client: SAUDI BAYTUR
Size: 110,000 sq.m.
Year: 2021

SCOPE

Concept Design
Schematic
Design Development
IFC
Shop Drawings
As Built Drawings

DISCIPLINE

Architecture
Interior Design
MEP
Structure
Landscape
Master Planning
Infrastructure

BIM

BIM Management
LOD 300
LOD 400
LOD 500





THE RED SEA DEVELOPMENT

SAUDI ARABIA

THE SOUTHERN DUNES - SIX SENSES HOTEL

Location: Jeddah, Saudi Arabia
 Program: Hotel

Architect: Foster & Partners
 Client: NESMA United Industries
 Size: 15,000 sq.m.
 Year: 2021



SCOPE

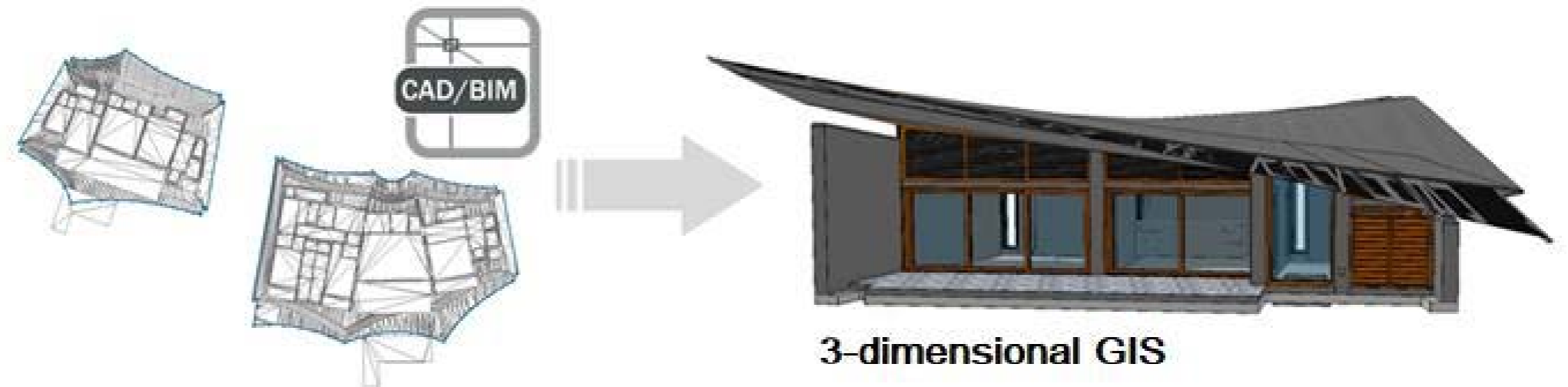
Concept Design
 Schematic
 Design Development
 IFC
 Shop Drawings
 As Built Drawings
 GIS

DISCIPLINE

Architecture
 Interior Design
 MEP
 Structure
 Landscape
 Master Planning
 Infrastructure

BIM

BIM Management
 LOD 300
 LOD 400
 LOD 500



UMMAHAT EL SHEIK - ST REGIS HOTEL

Location: Jeddah, Saudi Arabia
 Program: Hotel

Client: MAN Entreprise
 Size: 27,000 sq.m.
 Year: 2021



SCOPE

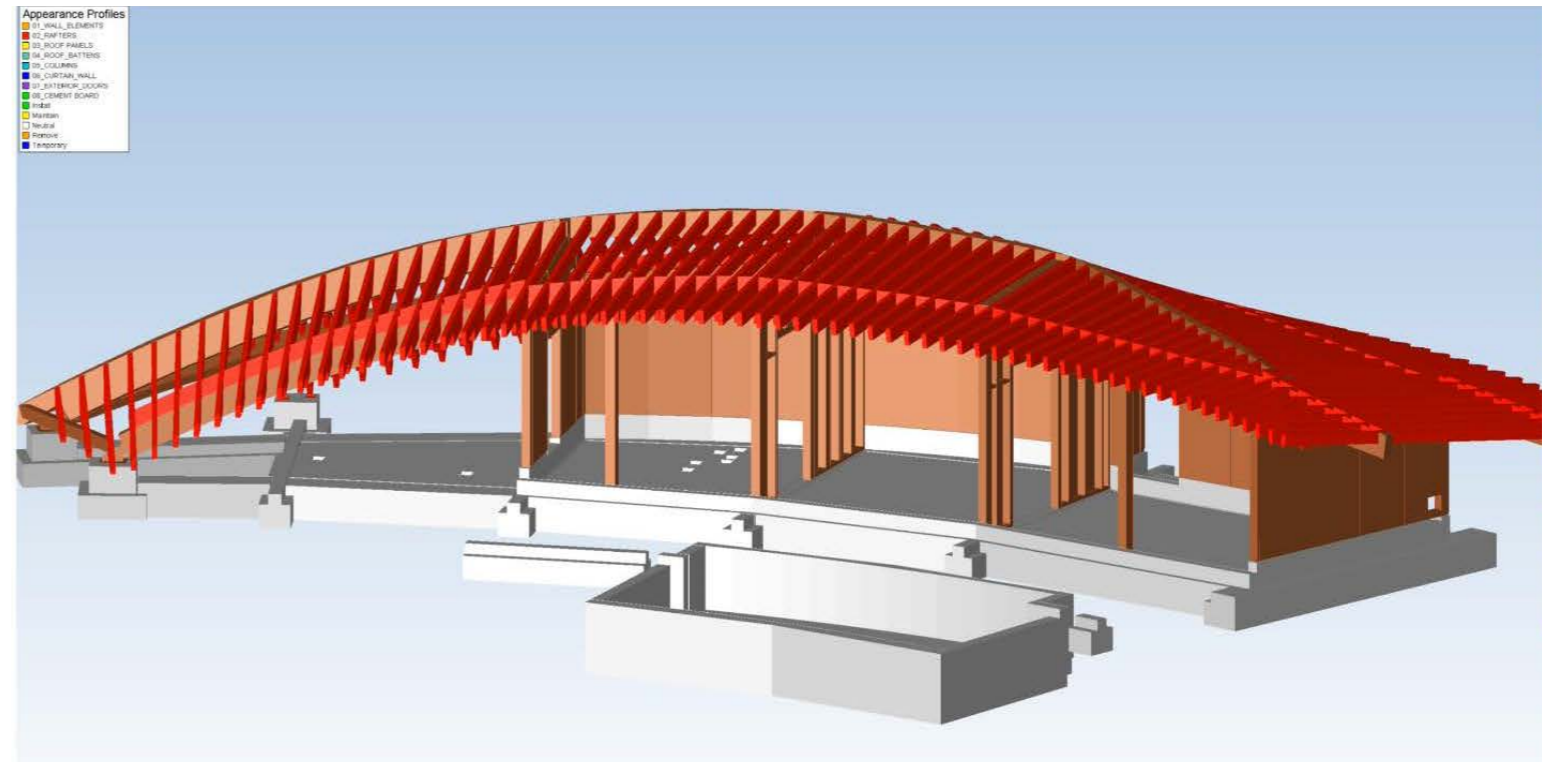
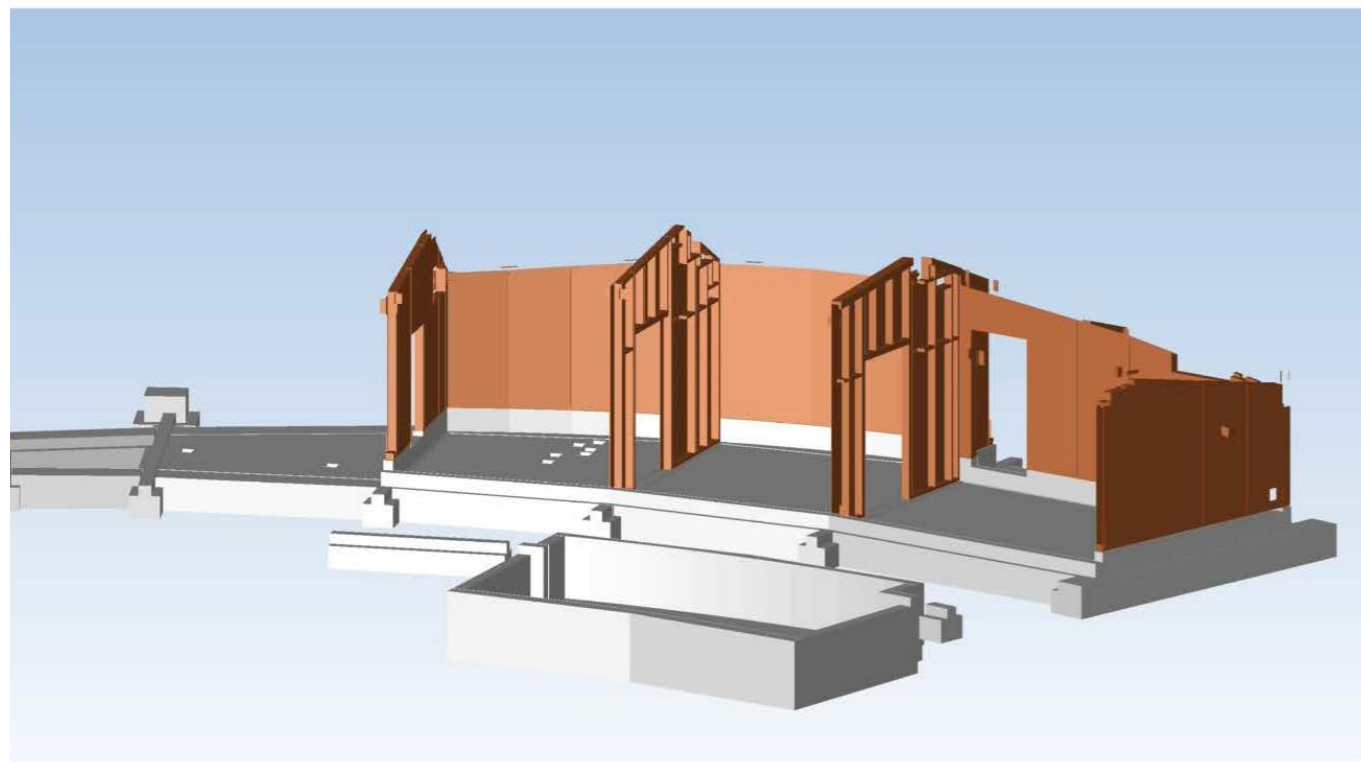
Concept Design
 Schematic
 Design Development
 IFC
 Shop Drawings
 As Built Drawings
 4D Simulation

DISCIPLINE

Architecture
 Interior Design
 MEP
 Structure
 Landscape
 Master Planning
 Infrastructure

BIM

BIM Management
 LOD 300
 LOD 400
 LOD 500



The Desert Rock Hotel

Location: Jeddah, Saudi Arabia

Program: Hotel

Architect: Oppenheim Architecture

Client: AFCC / MAS Construction

Size: 31,000 sq.m.

Year: 2023

SCOPE

Concept Design
Schematic
Design Development
IFC
Shop Drawings
As Built Drawings
GIS

DISCIPLINE

Architecture
Interior Design
MEP
Structure
Landscape
Master Planning
Infrastructure

BIM

BIM Management
LOD 300
LOD 400
LOD 500



MARSA VILLAGE

SAUDI ARABIA



MARSA VILLAGE - SHURA CENTRAL HOTEL 1

Location: Diriyah, Saudi Arabia
Program: Hospitality



Client: GET
Size: 125,000 sq.m.
Year: 2023

SCOPE

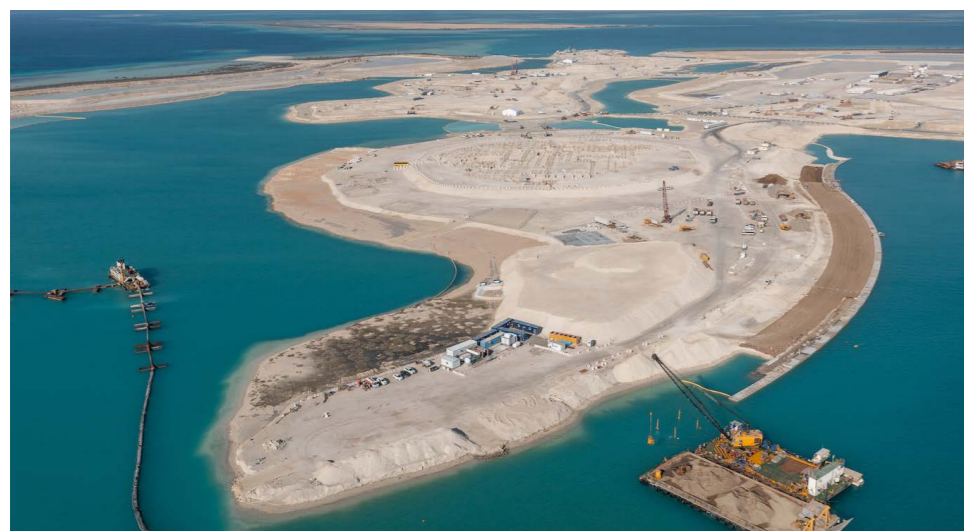
Concept Design
Schematic
Design Development
IFC
Shop Drawings
As Built Drawings

DISCIPLINE

Architecture
Interior Design
MEP
Structure
Landscape
Master Planning
Infrastructure

BIM

BIM Management
LOD 300
LOD 400
LOD 500



**KKIA INTEGRATED LOGISTICS
BONDED ZONE
SAUDI ARABIA**



KKIA INTEGRATED LOGISTICS BONDED ZONE

Location: Riyadh, Saudi Arabia
 Program: Commercial

Client: DG JONES
 Size: 30,000 sq.m.
 Year: 2021

SCOPE

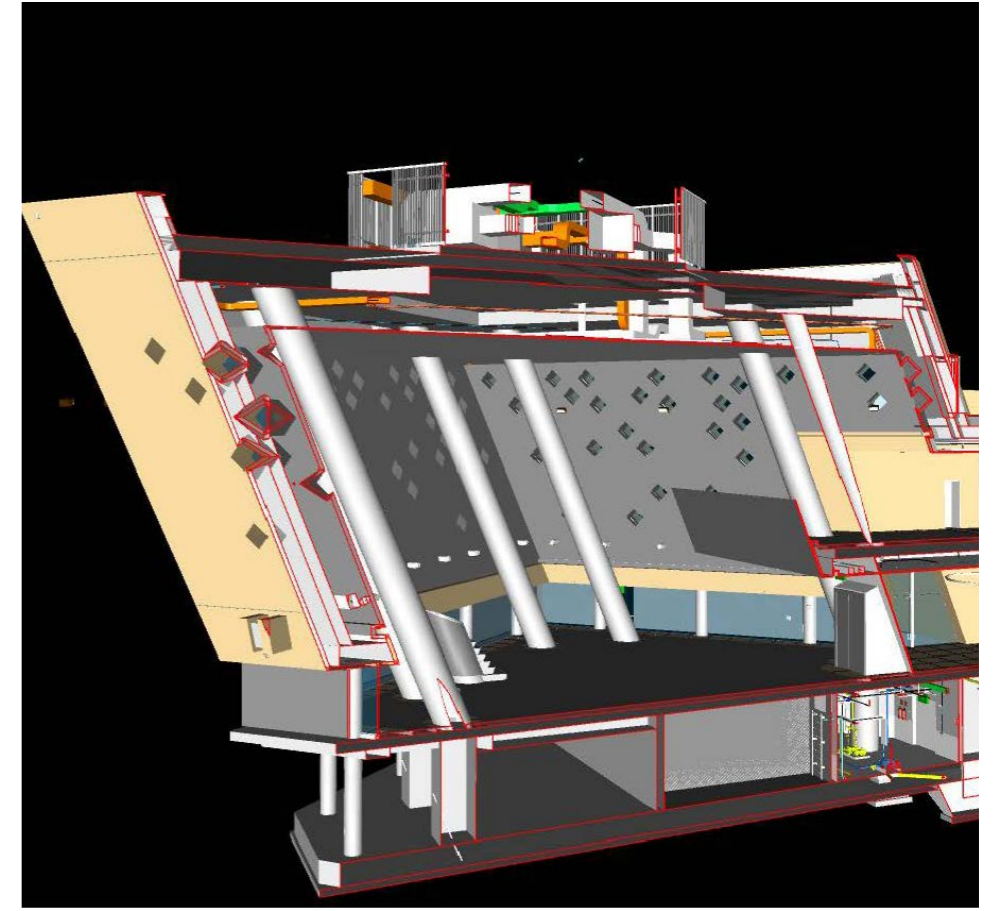
Concept Design
 Schematic
 Design Development
 IFC
 Shop Drawings
 As Built Drawings
 GIS

DISCIPLINE

Architecture
 Interior Design
 MEP
 Structure
 Landscape
 Master Planning
 Infrastructure

BIM

BIM Management
 LOD 300
 LOD 400
 LOD 500



**MAYDAN SAYYED
AL SHOUHADAA'
SAUDI ARABIA**



MAYDAN SAYYED AL SHOUHADAA'

Location: Al Medina, Saudi Arabia
 Program: Mixed Use

Client: SUD ARCHITECTES
 Size: 30,000 sq.m.
 Year: 2020
 Status: Competition Won

SCOPE

Concept Design
 Schematic
 Design Development
 IFC
 Shop Drawings
 As Built Drawings
 GIS

DISCIPLINE

Architecture
 Interior Design
 MEP
 Structure
 Landscape
 Master Planning
 Infrastructure

BIM

BIM Management
 LOD 200
 LOD 300
 LOD 400
 LOD 500





NANTES METROPOL HABITAT
LA CANOPEE
FRANCE

NANTES METROPOL HABITAT - LA CANOPEE

Location: Nantes, France
Program: Mixed-Use



Architect: YTAA
Client: VINCI - SOGEA
Size: 16,000 sqm
Year: 2017

SCOPE

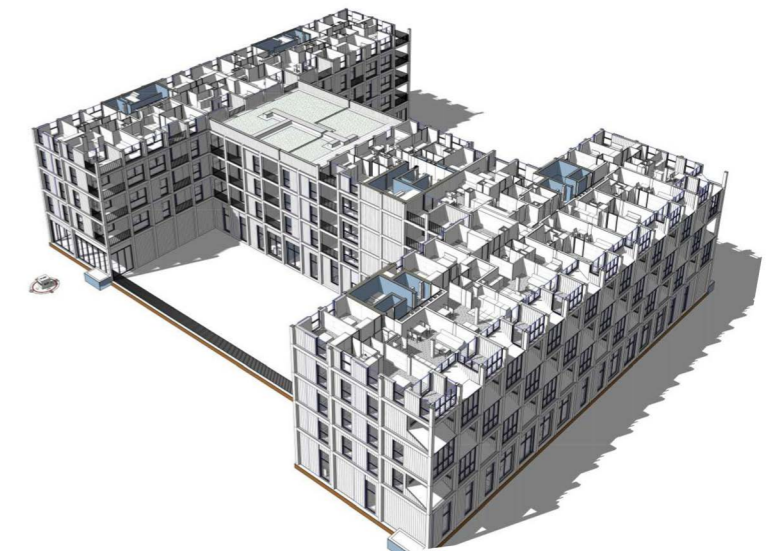
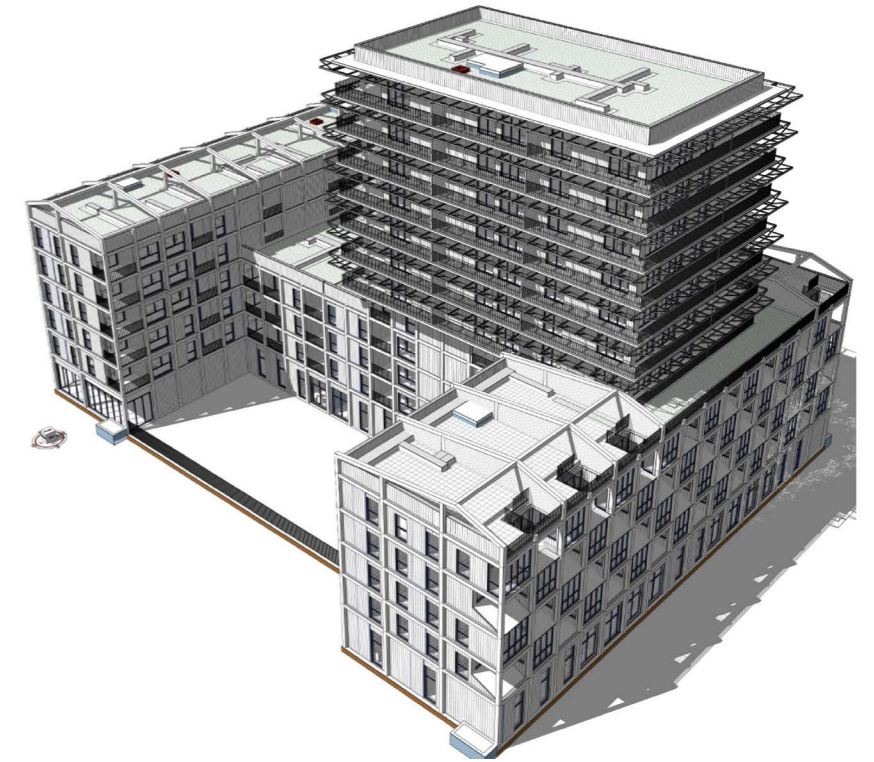
Concept Design
Schematic
Design Development
IFC
Shop Drawings
As Built Drawings
GIS

DISCIPLINE

Architecture
Interior Design
MEP
Structure
Landscape
Master Planning
Infrastructure

BIM

BIM Coordination
LOD 300
LOD 400
LOD 500



US EMBASSY LEBANON



US EMBASSY

Location: Awkar, Lebanon
 Program: Governmental



Architect: Morphosis
Client: MAN Entreprise
Size: 93,000 sqm
Year: 2018

SCOPE

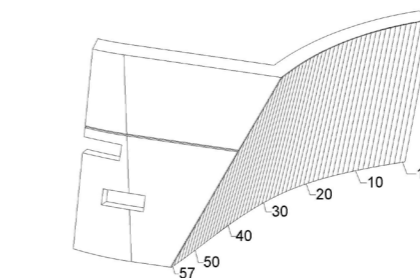
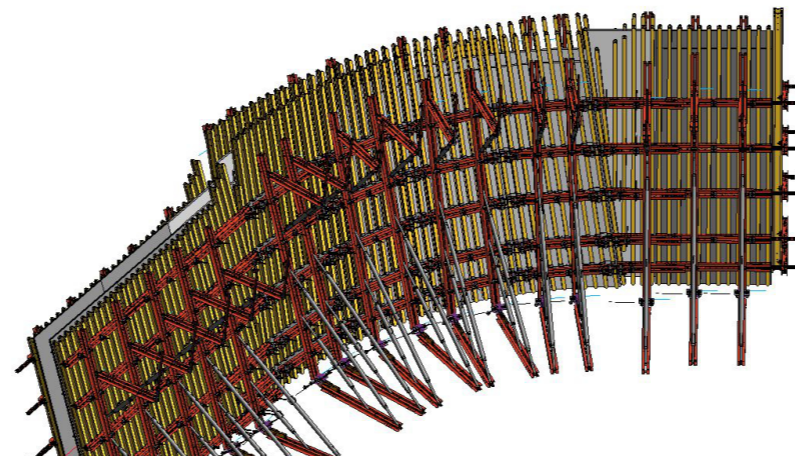
- Concept Design
- Schematic
- Design Development
- IFC
- Shop Drawings
- As Built Drawings
- GIS
- Building Envelope Engineering

DISCIPLINE

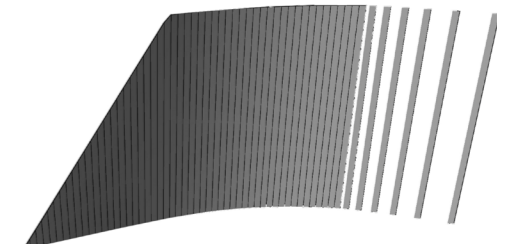
- Architecture
- Interior Design
- MEP
- Structure
- Landscape
- Master Planning
- Infrastructure

BIM

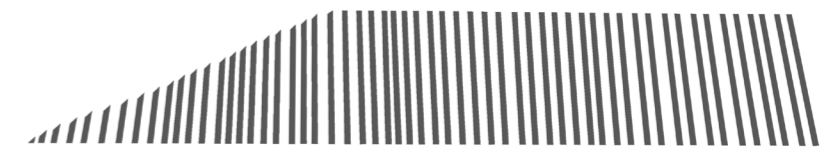
- BIM Coordination
- LOD 300
- LOD 400
- LOD 500



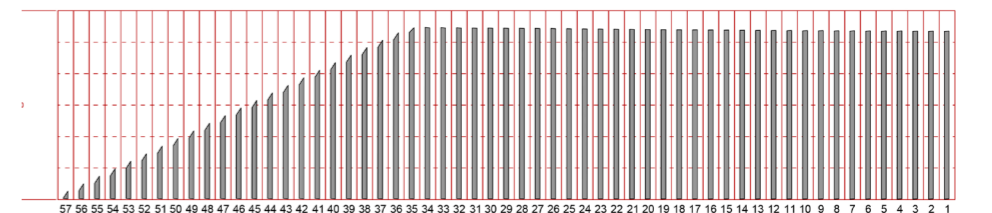
ALIGNMENT OF POPLAR BOARDS ON THE DESIGNATED SURFACE USING REVIT



BOARDS GRAPHICS ARE UNROLLED ON A FLAT SURFACE USING RHINO



RESULT IS EXPORTED TO AUTOCAD AS 2D CUTTING PROFILES PRESERVING SHAPE FIDELITY



An aerial photograph of the Louvre Abu Dhabi, showcasing its iconic dome. The dome is a massive, spherical structure covered in a complex, repeating geometric pattern of interlocking lines and shapes, creating a lace-like appearance. It is situated on a small island in the turquoise waters of the Louvre Abu Dhabi lagoon. In the background, the surrounding urban landscape of Abu Dhabi is visible, including various buildings, roads, and parking areas. The overall scene is captured from a high angle, providing a comprehensive view of the building's unique architecture and its integration with the surrounding environment.

LOUVRE ABU DHABI
UNITED ARAB EMIRATES

LOUVRE ABU DHABI

Location: Abu Dhabi, United Arab Emirates
Program: Museum

Architect: Atelier Jean Nouvel
Client: Arabtec, San Jose, Oger
Size: 24,000 sqm
Year: 2015-2020

SCOPE

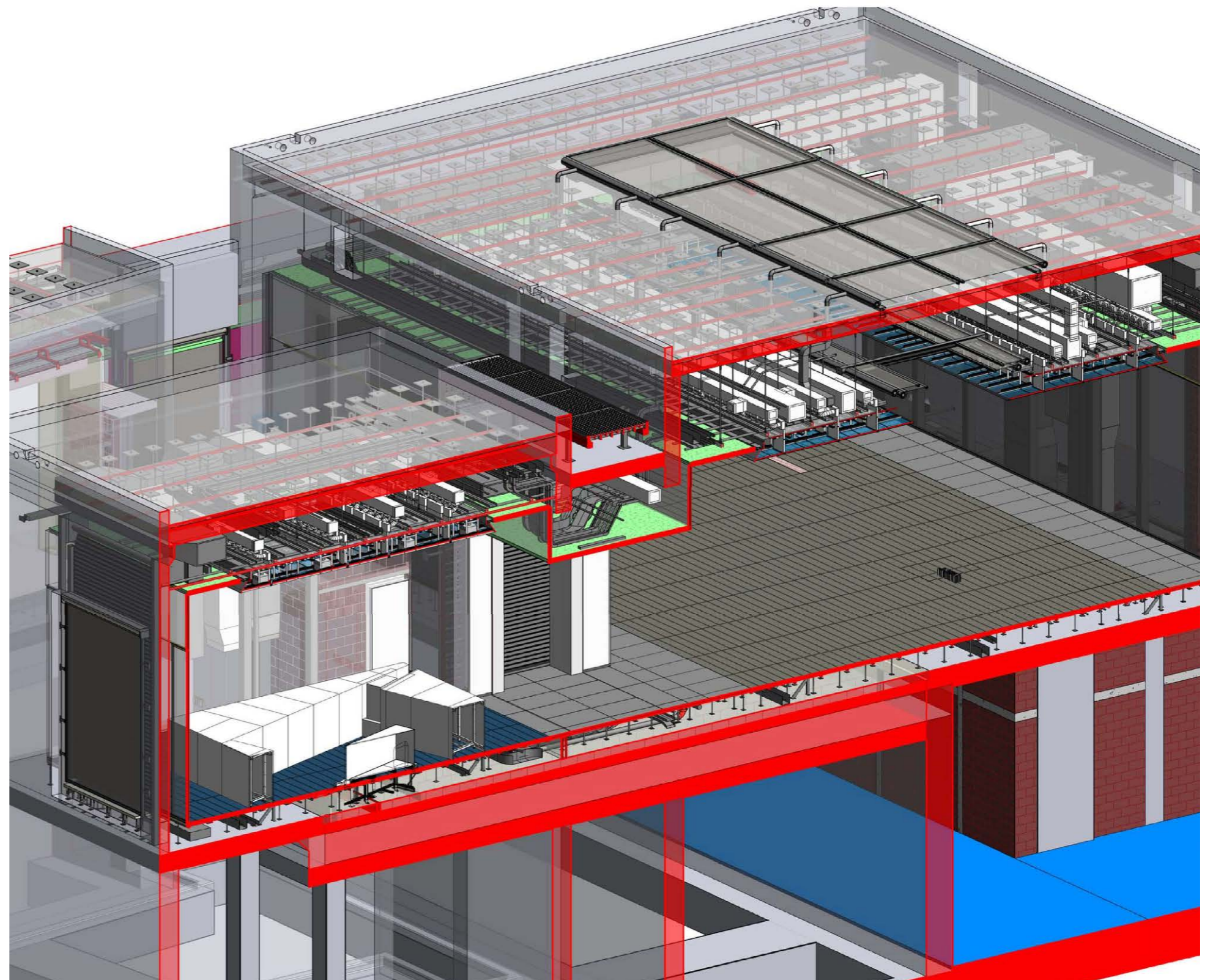
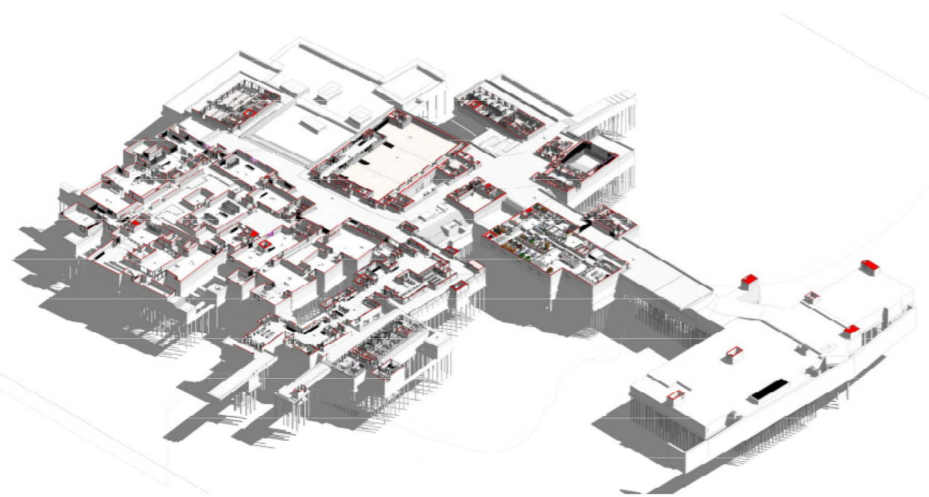
Concept Design
Schematic
Design Development
IFC
Shop Drawings
As Built Drawings
GIS

DISCIPLINE

Architecture
Interior Design
MEP
Structure
Landscape
Master Planning
Infrastructure

BIM

BIM Coordination
LOD 300
LOD 400
LOD 500





WORK

INTERIOR DESIGN

QATAR CENTRAL BANK

Location: Doha, Qatar
Program: VIP Corporate Offices



Client: Imar/Global Art
Size: 3,500 sqm
Year: 2023-2024

SCOPE

Concept Design
Schematic
Design Development
IFC

Shop Drawings
As Built Drawings
Site Coordination

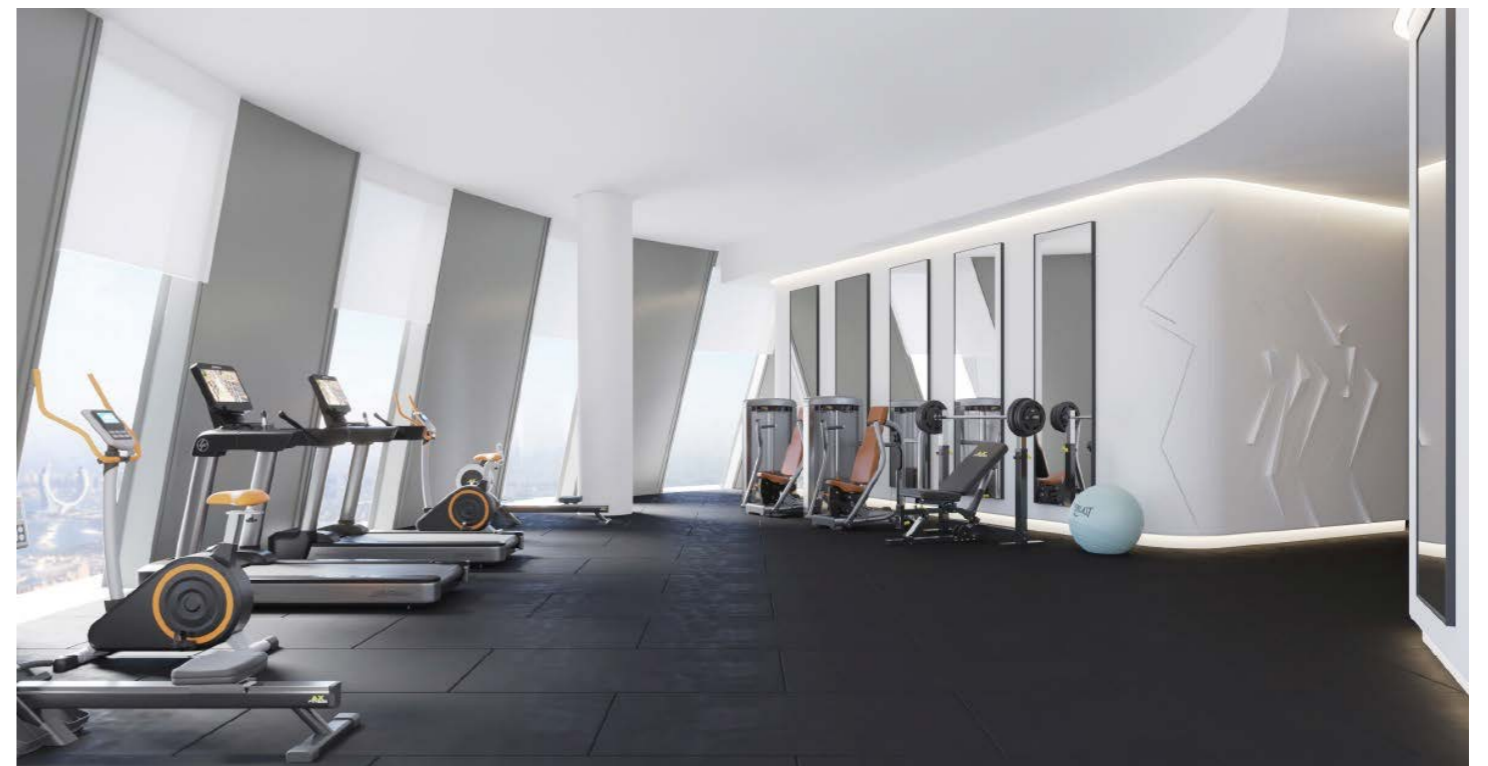
BIM

BIM Coordination
LOD 300
LOD 400
LOD 500



QATAR CENTRAL BANK

Location: Doha, Qatar
Program: VIP Corporate Offices



JADWA HEADQUARTERS

Location: Riyadh, Saudi Arabia
Program: Corporate Offices



Client: Qdesign
Size: 3,500 sqm
Year: 2023

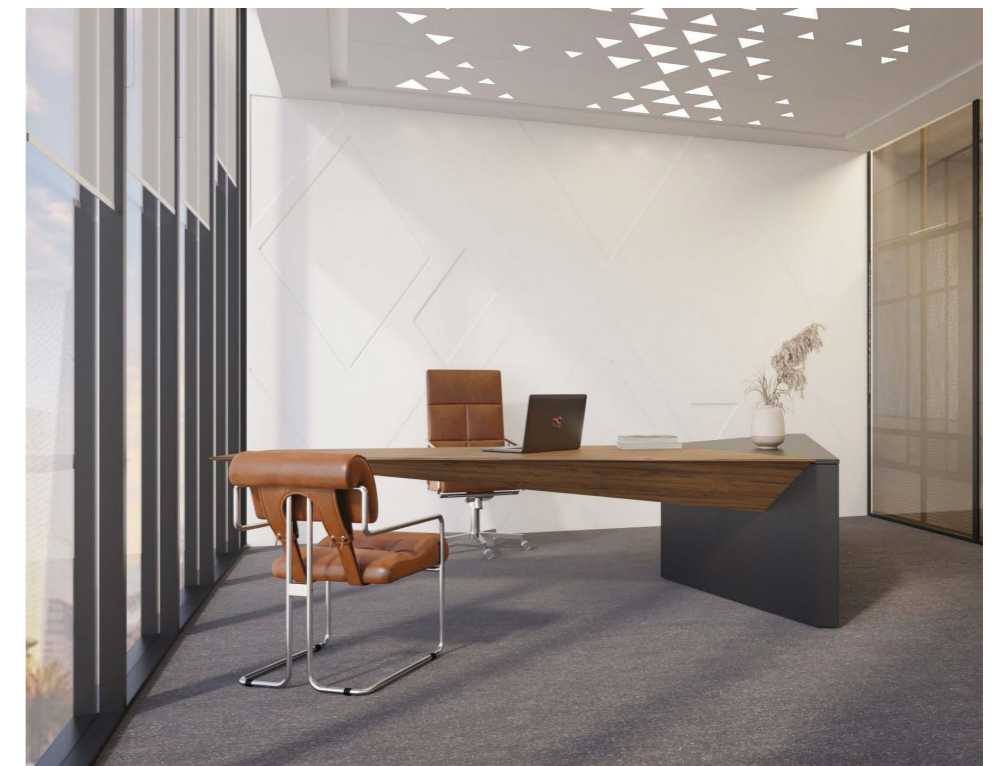
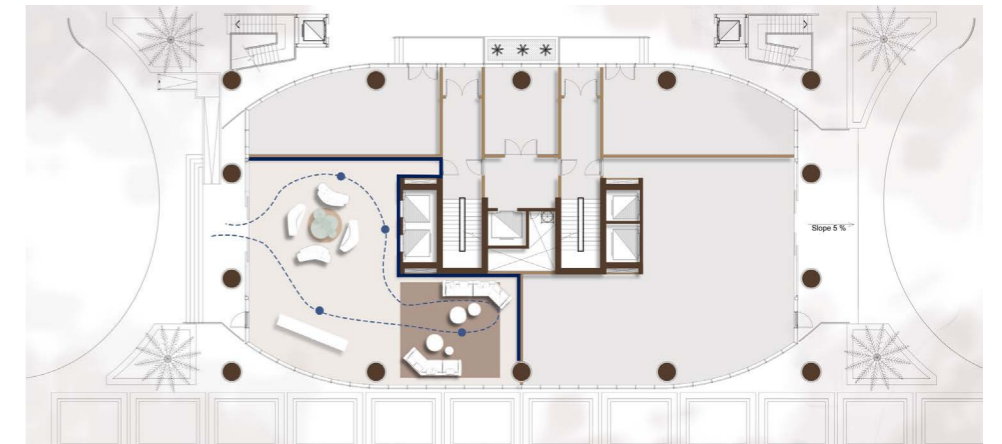
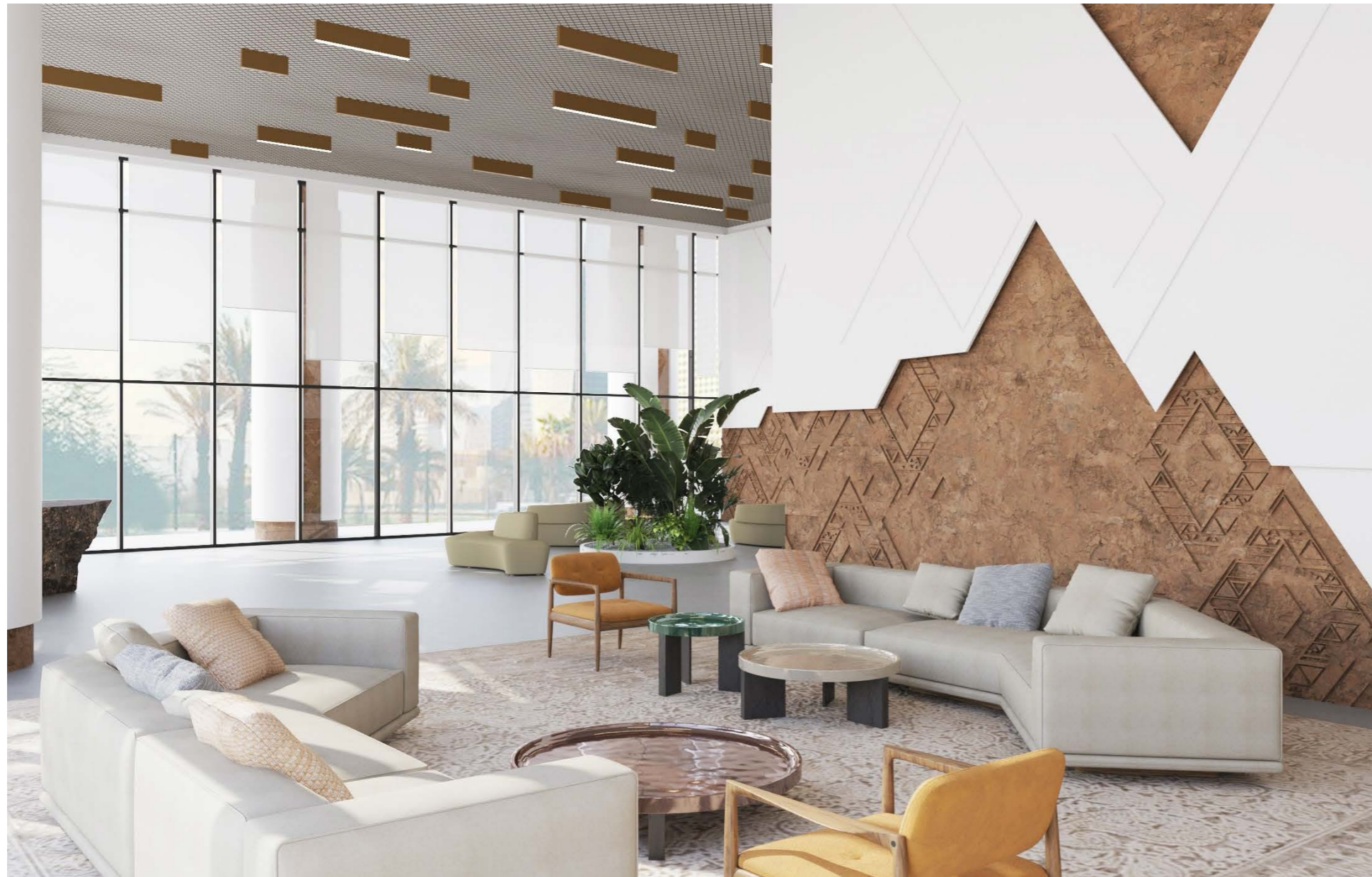
SCOPE

Concept Design
Schematic
Design Development
IFC

Shop Drawings
As Built Drawings
Site Coordination

BIM

BIM Coordination
LOD 300
LOD 400
LOD 500



PWC HEADQUARTERS

Location: Riyadh, Saudi Arabia
Program: Corporate Offices



Client: Qdesign
Size: 5,500 sqm
Year: 2023

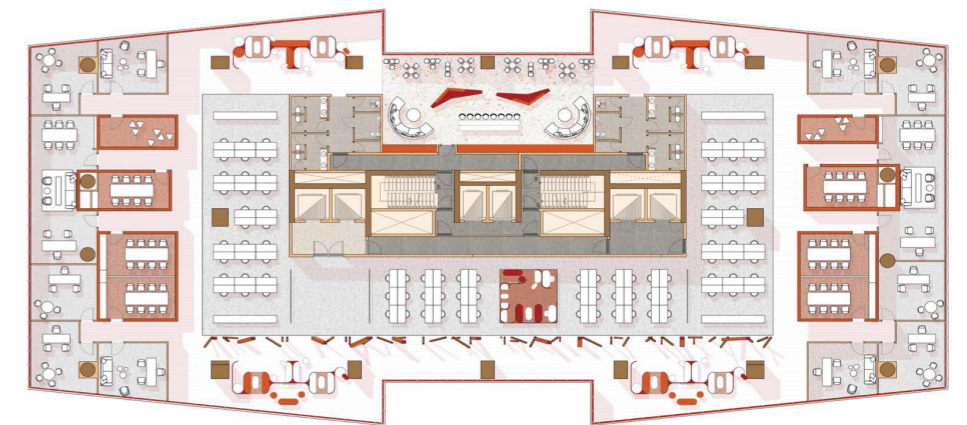
SCOPE

Concept Design
Schematic
Design Development
IFC

Shop Drawings
As Built Drawings
Site Coordination

BIM

BIM Coordination
LOD 300
LOD 400
LOD 500



MINISTRY OF CULTURE

Location: Diriyah, Saudi Arabia
Program: VIP Corporate Offices



Client: Ministry of Culture KSA
Size: 33000 sqm
Year: 2023-2024

SCOPE

Concept Design
Schematic
Design Development
IFC

Shop Drawings
As Built Drawings
Site Coordination

BIM

BIM Coordination
LOD 300
LOD 400
LOD 500



BERRO'S BISTROT

Location: Cairo, Egypt
Program: Bistrot, Restaurant



Client: Berro
Size: 350 sqm
Year: 2023

SCOPE

Concept Design
Schematic
Design Development
IFC

Shop Drawings
As Built Drawings
Site Coordination

BIM

BIM Coordination
LOD 300
LOD 400
LOD 500



VIA RIYADH

Location: Riyadh, Saudi Arabia
Program: Restaurants, Cafes,



Client: Sela | SUD Architectes
Size: 6,000 sqm
Year: 2021-2023

SCOPE

Concept Design
Schematic
Design Development
IFC

Shop Drawings
As Built Drawings
Site Coordination

BIM

BIM Coordination
LOD 300
LOD 400
LOD 500



RAOUL'S

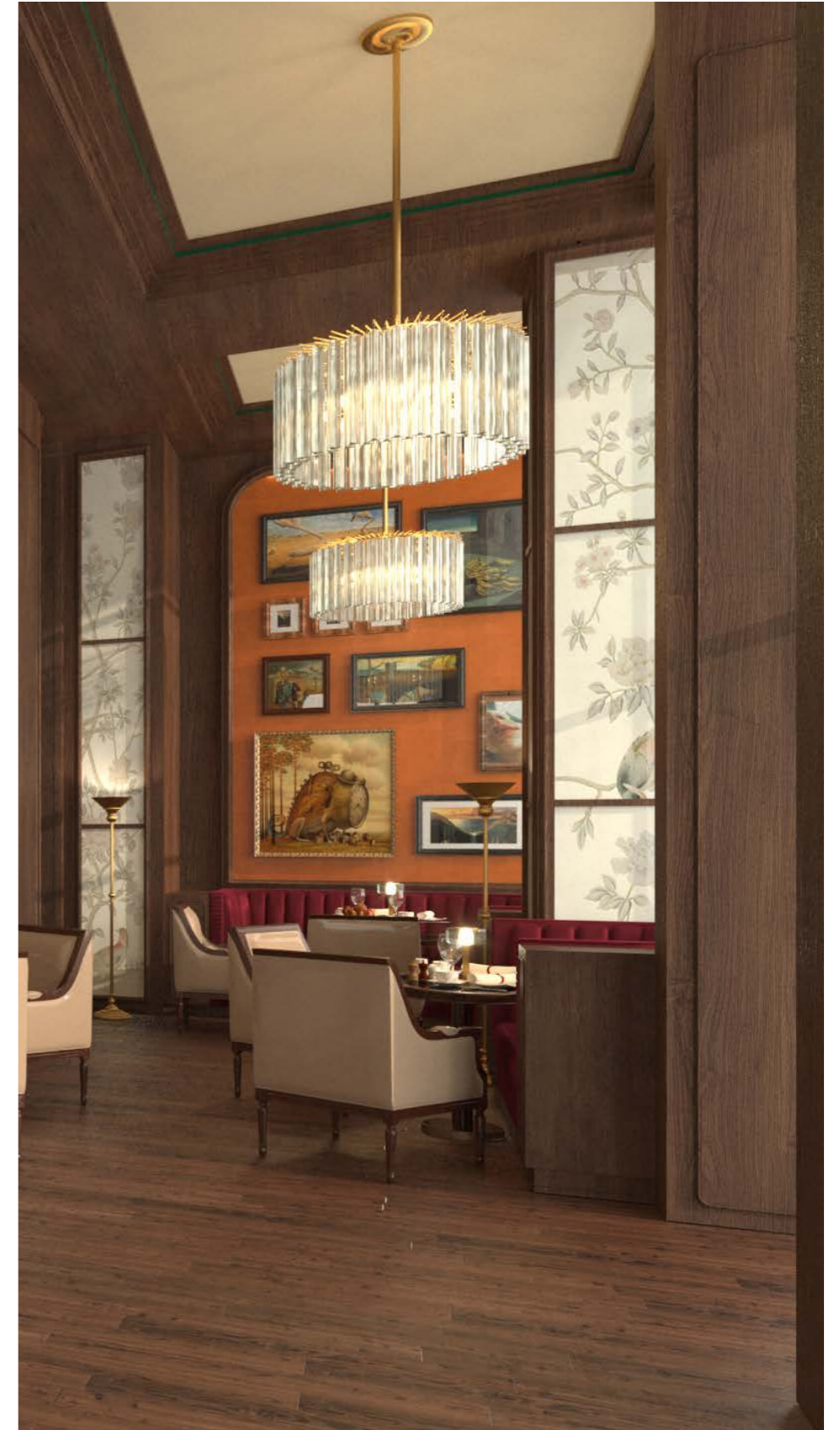
VIA RIYADH - Bianca

Location: Riyadh, Saudi Arabia
Program: Restaurants, Cafes,



VIA RIYADH - Les Deux Magots

Location: Riyadh, Saudi Arabia
Program: Restaurants, Cafes,



VIA RIYADH - Manuh Cigar

Location: Riyadh, Saudi Arabia
Program: Restaurants, Cafes,



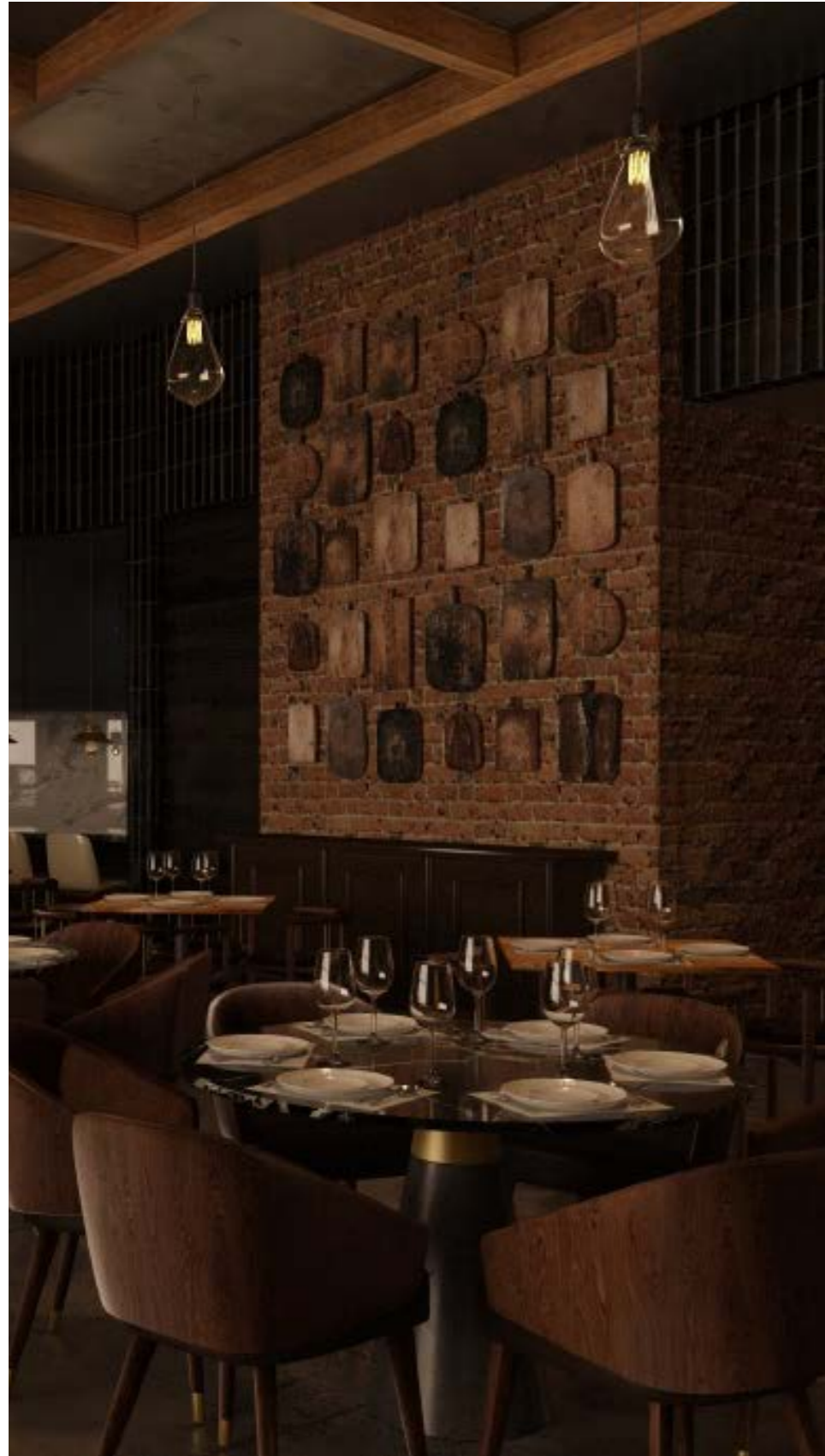
VIA RIYADH - Elle Cafe

Location: Riyadh, Saudi Arabia
Program: Restaurants, Cafes,



VIA RIYADH - Chi Spacca

Location: Riyadh, Saudi Arabia
Program: Restaurants, Cafes,



Four Seasons Hotel

Location: Jeddah, Saudi Arabia
Program: Hotel

Architect:
Client: Haverlock
Size: 35,000 sqm
Year: 2023

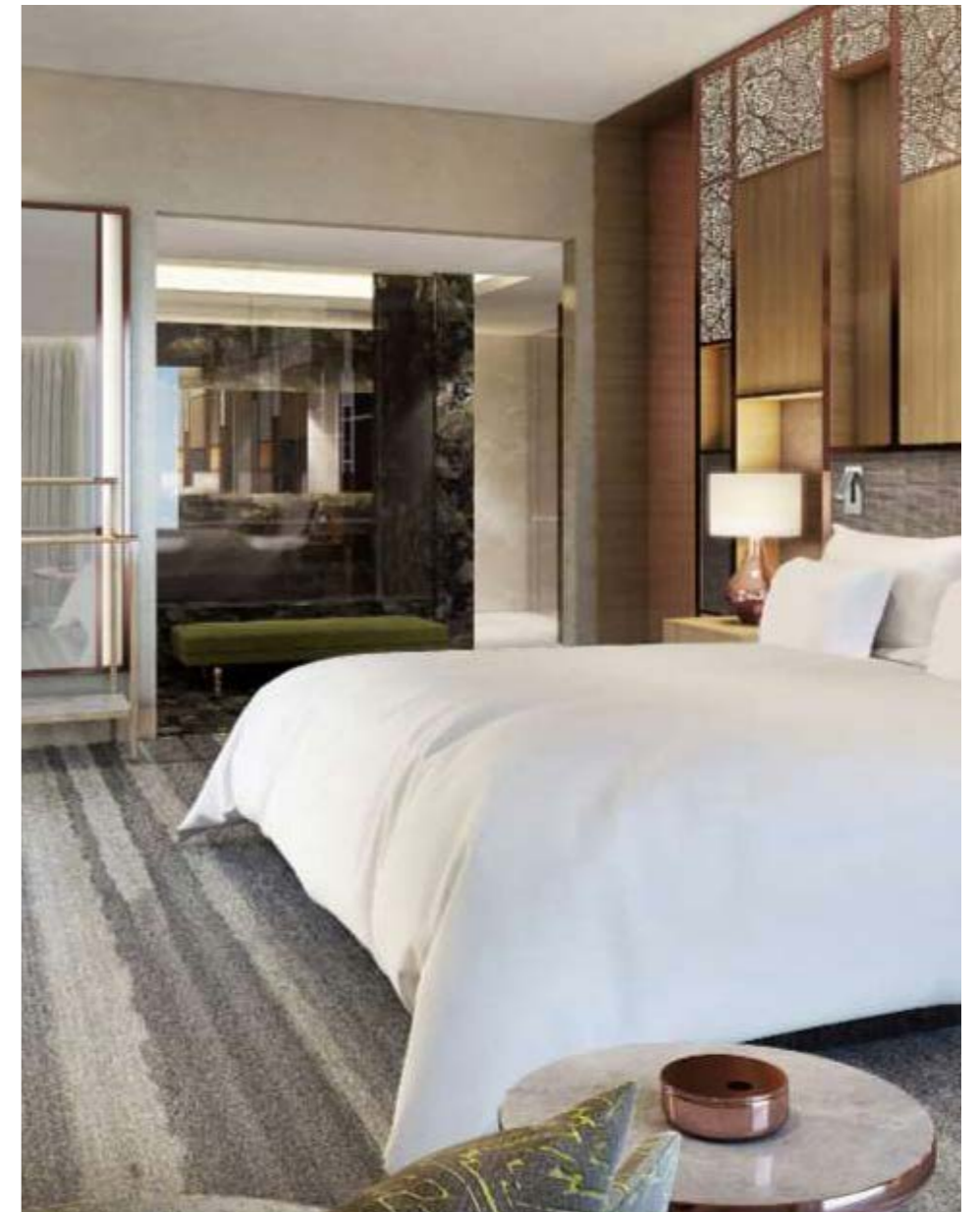
SCOPE

Concept Design
Schematic
Design Development
IFC

Shop Drawings
As Built Drawings
Site Coordination

BIM

BIM Mangement
LOD 300
LOD 400
LOD 500



CLUB HOUSE

Location: Saudi Arabia
Program: Club House

Client: Private
Size: N/A
Year: 2022

SCOPE

Concept Design
Schematic
Design Development
IFC

Shop Drawings
As Built Drawings
Site Coordination

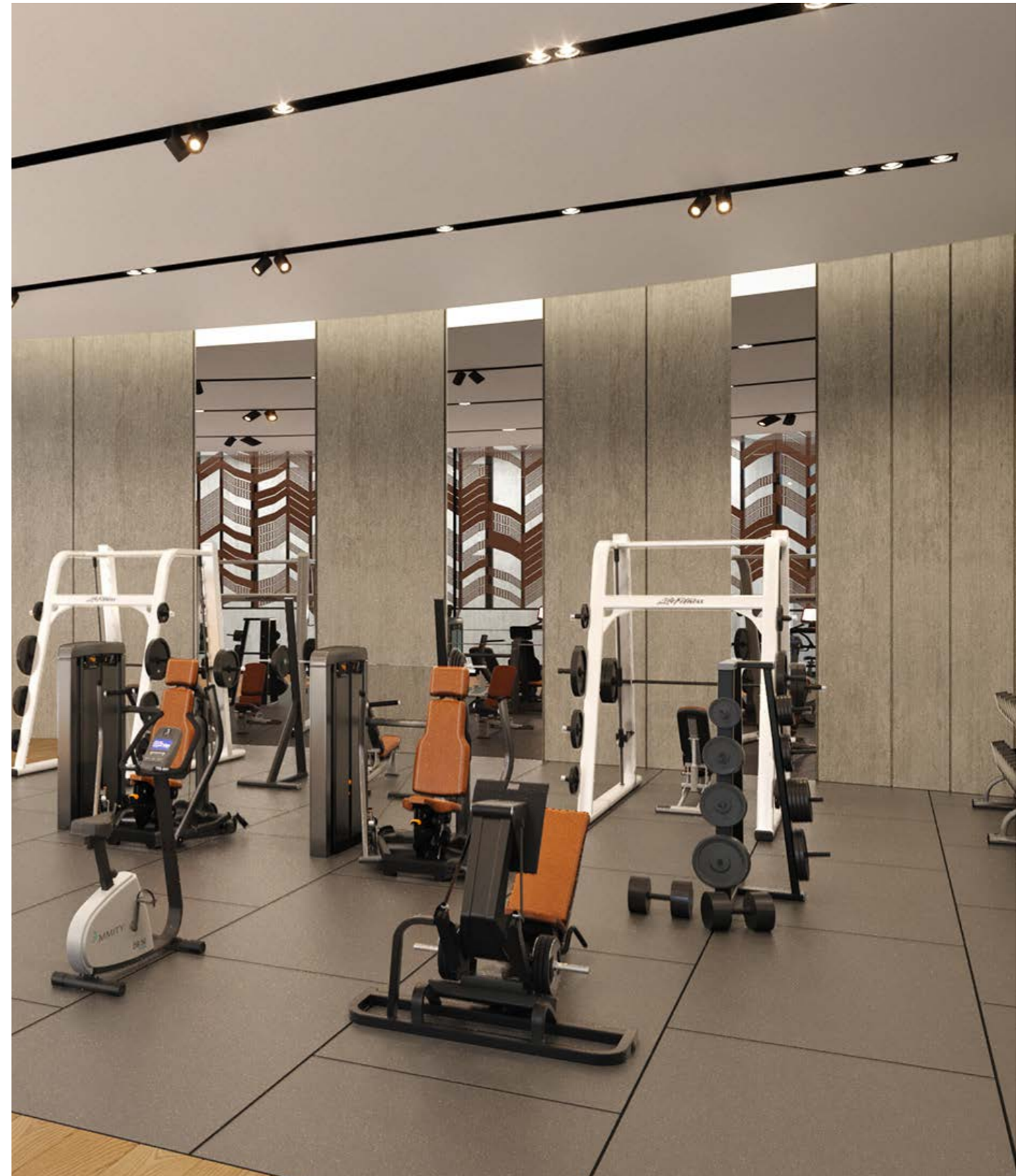
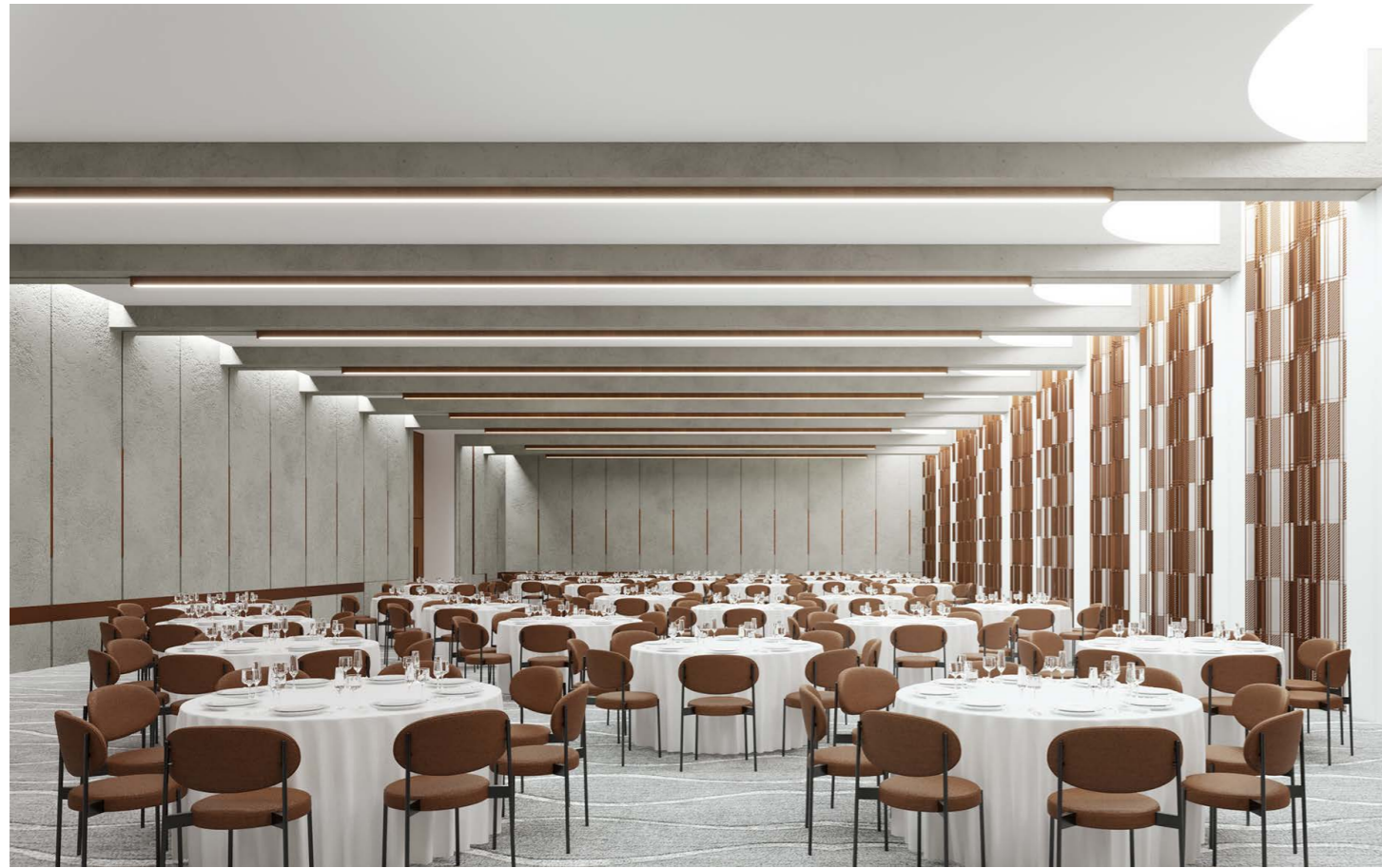
BIM

BIM Mangement
LOD 300
LOD 400
LOD 500



CLUB HOUSE

Location: Saudi Arabia
Program: Club House



ST REGIS - ASSOUFID

Location: Morocco
Program: Hotel



Client: SSH
Size: 35,000 sqm
Year: 2018

SCOPE

Concept Design
Schematic
Design Development
IFC

Shop Drawings
As Built Drawings
Site Coordination

BIM

BIM Mangement
LOD 300
LOD 400
LOD 500



ST REGIS - ASSOUFID

Location: Morocco
Program: Hotel



LAGOS AIRPORT HOTEL

Location: Lagos, Nigeria
Program: Hotels

Client: MAN Entreprise
Size: 36,000 sqm
Year: 2022

SCOPE

Concept Design
Schematic
Design Development
IFC

Shop Drawings
As Built Drawings
Site Coordination

BIM

BIM Mangement
LOD 300
LOD 400
LOD 500



LAGOS AIRPORT HOTEL

Location: Lagos, Nigeria
Program: Hotels



METROPOLE PALACE MONACO

Location: Monaco, France
Program: Hotels



Client: Private
Size: N/A
Year: 2004

SCOPE

Concept Design
Schematic
Design Development
IFC

Shop Drawings
As Built Drawings
Site Coordination

BIM

BIM Mangement
LOD 300
LOD 400
LOD 500



VILLA THALGO-PARIS

Location: Paris, France
Program: SPA

Client: Private
Size: N/A
Year: 2011

SCOPE

Concept Design
Schematic
Design Development
IFC

Shop Drawings
As Built Drawings
Site Coordination

BIM

BIM Mangement
LOD 300
LOD 400
LOD 500



PRIVATE MAJLIS

Location: Abu Dhabi, United Arab Emirates
Program: Residential

Client: H20
Size: 14,000 sqm
Year: 2022

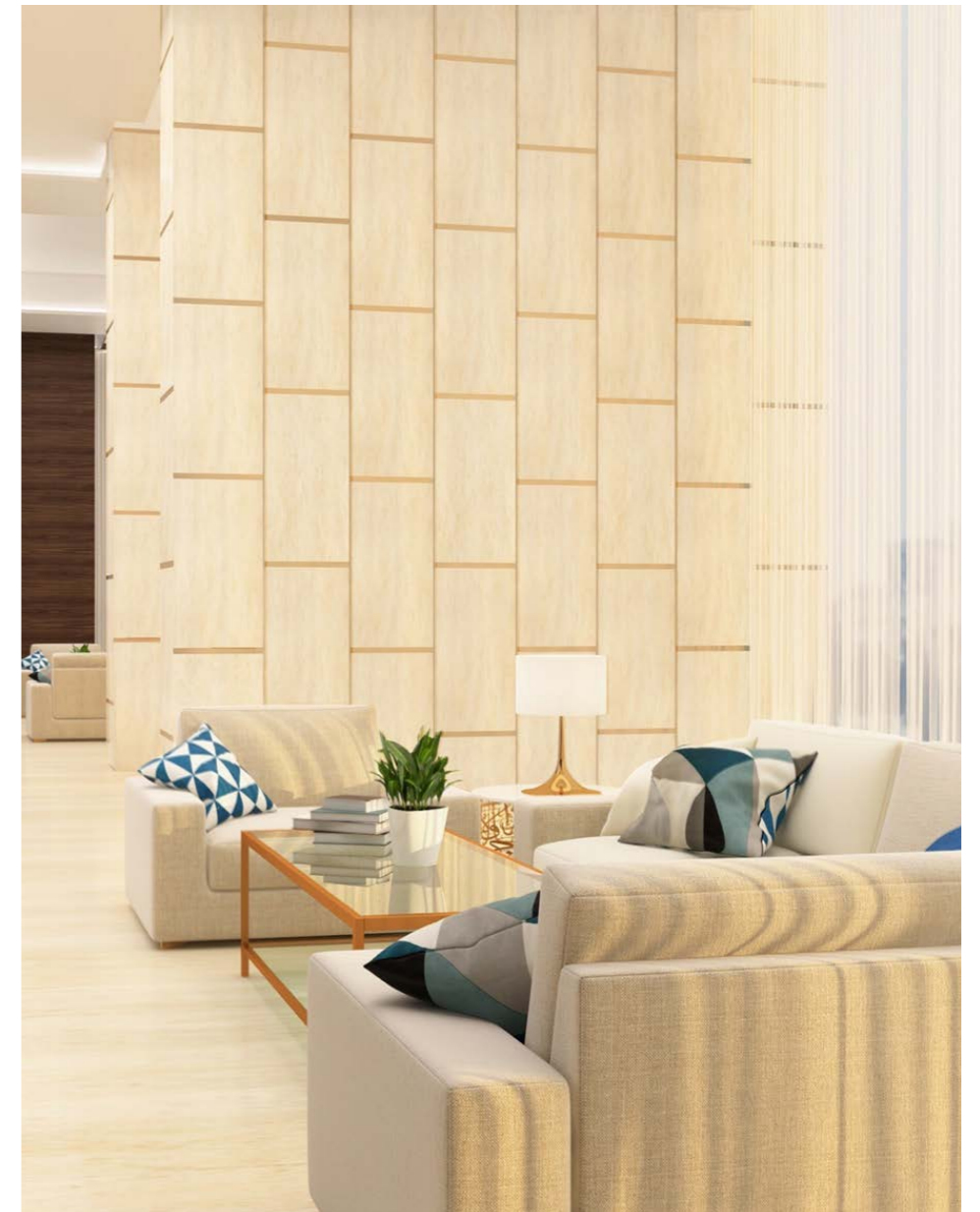
SCOPE

Concept Design
Schematic
Design Development
IFC

Shop Drawings
As Built Drawings
Site Coordination

BIM

BIM Mangement
LOD 300
LOD 400
LOD 500



PRIVATE MAJLIS

Location: Abu Dhabi, United Arab Emirates
Program: Residential



SSOIEI

Location: Jeddah, KSA
Program: Mixed-Use



Client: Olayan Group
Size: 10,000 sqm
Year: 2022

SCOPE

Concept Design
Schematic
Design Development
IFC

Shop Drawings
As Built Drawings
Site Coordination

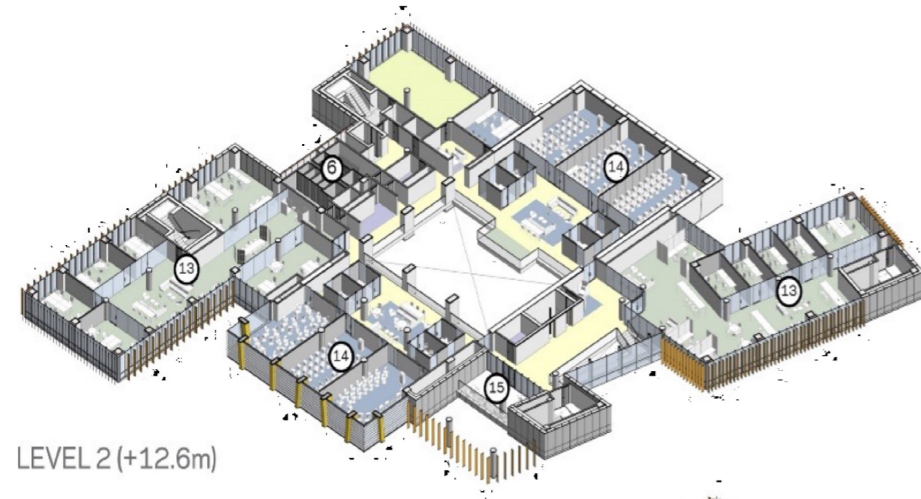
BIM

BIM Mangement
LOD 300
LOD 400
LOD 500

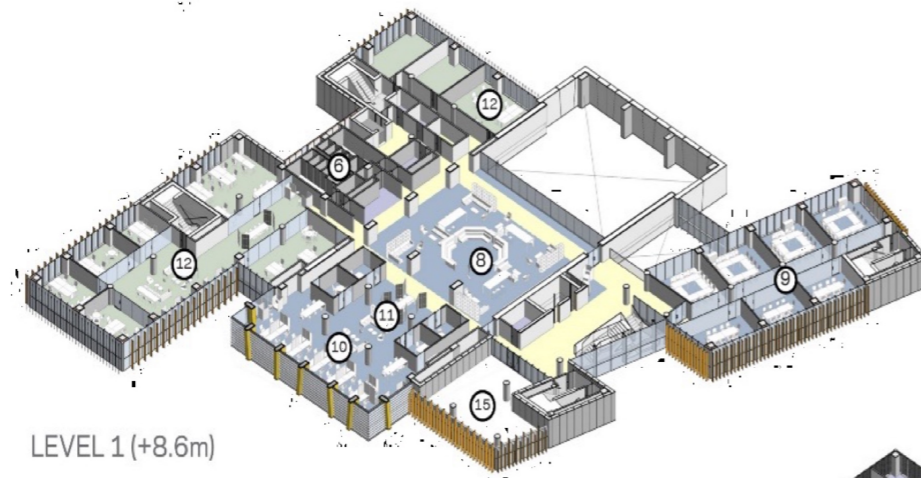


SSOIEI

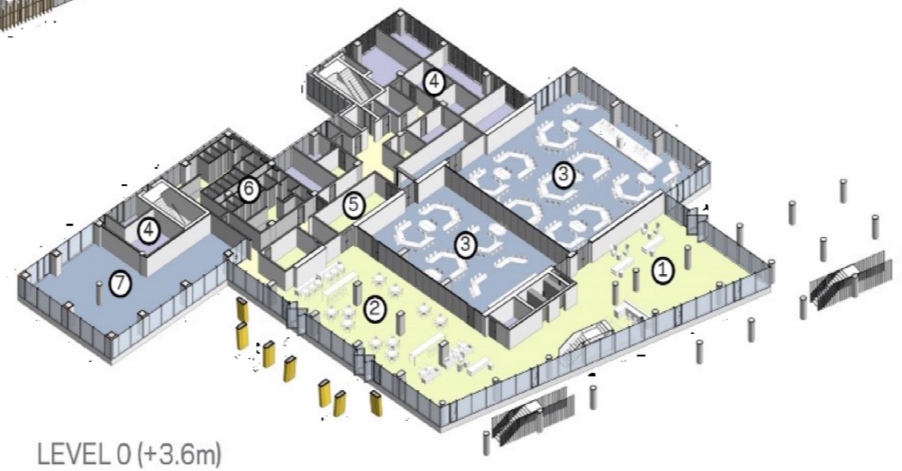
Location: Jeddah, KSA
Program: Mixed-Use



LEVEL 2 (+12.6m)



LEVEL 1 (+8.6m)



LEVEL 0 (+3.6m)

1. Main Entrance / Hall of Fame
2. Cafeteria
3. Innovation Work Room
4. Technical Support Spaces
5. Kitchen Preparation
6. Toilets
7. Teaching Lab
8. Institute Central Area
9. Meeting Rooms
10. Co-Working Space
11. Huddle Rooms
12. Start-up Workspace / Offices
13. Growth Workspace / Offices
14. Lecture Spaces
15. Terrace



AL ULA SOCIAL HABILITATION CENTRE

Location: Al Ula, Saudi Arabia
Program: Building

Client: SSH
Size: 14,000 sqm
Year: 2022

SCOPE

Concept Design
Schematic
Design Development
IFC

Shop Drawings
As Built Drawings
Site Coordination

BIM

BIM Mangement
LOD 300
LOD 400
LOD 500



PRINCESS NOOR UNIVERSITY

Location: Saudi Arabia
Program: University

Client: Oger International
Size: 60,000 sqm
Year: 2010

SCOPE

Concept Design
Schematic
Design Development
IFC

Shop Drawings
As Built Drawings
Site Coordination
Value Engineering

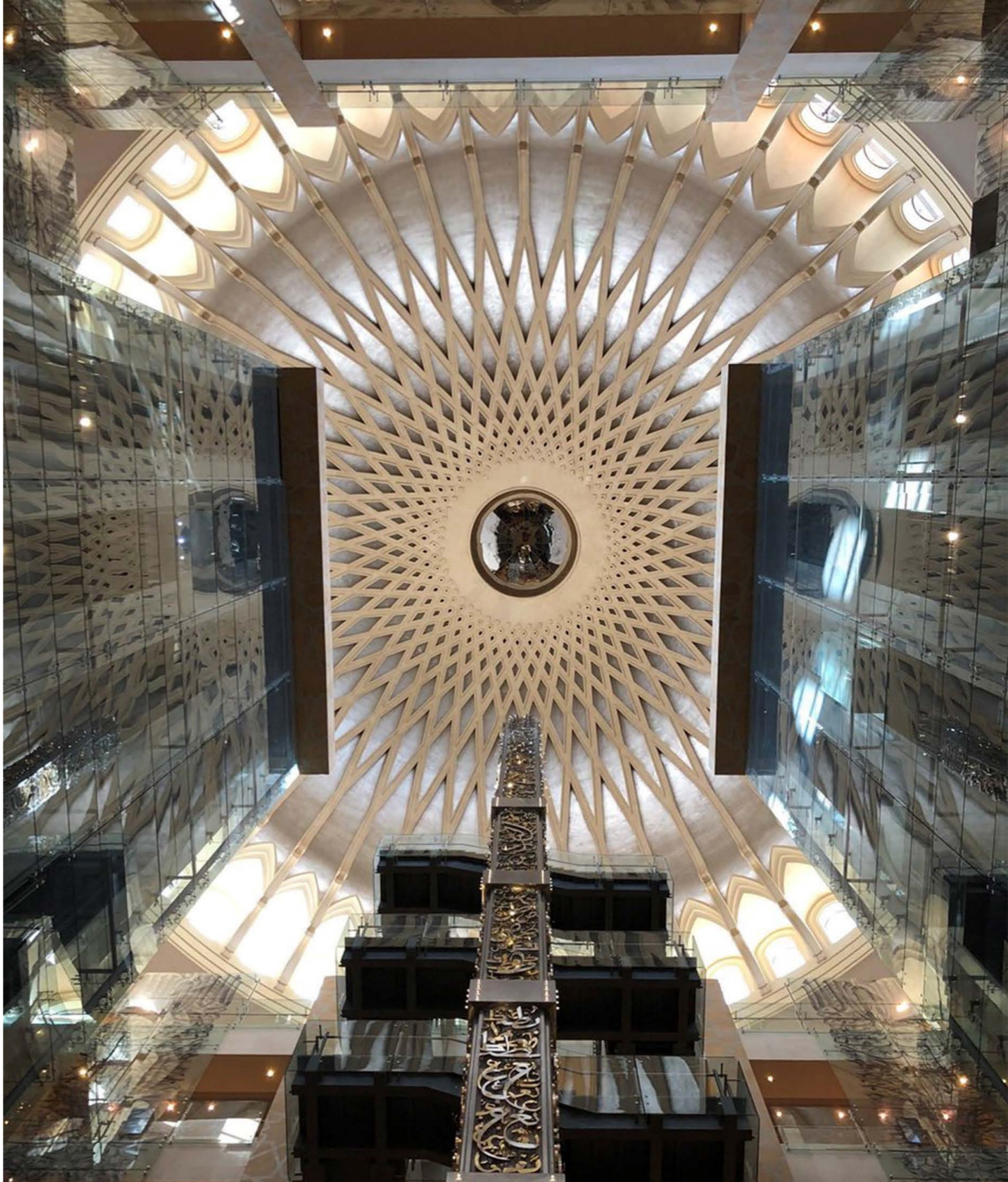
BIM

BIM Mangement
LOD 300
LOD 400
LOD 500



PRINCESS NOOR UNIVERSITY

Location: Saudi Arabia
Program: University



LA SORBONNE UNIVERSITY

Location: Abu Dhabi, United Arab Emirates
Program: University



Client: Oger International
Size: 50,000 sqm
Year: 2010

SCOPE

Concept Design
Schematic
Design Development
IFC

Shop Drawings
As Built Drawings
Site Coordination
Value Engineering

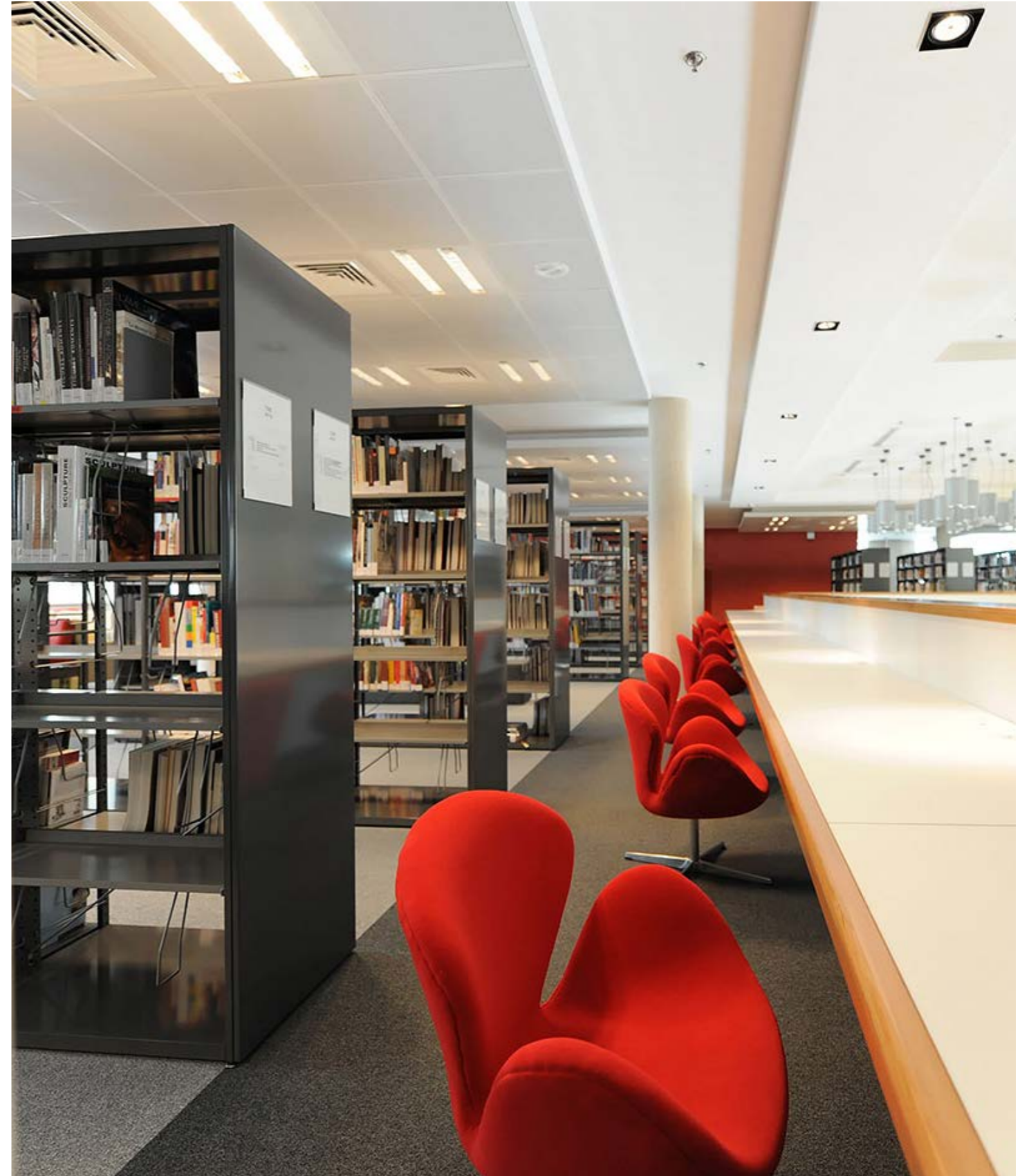
BIM

LOD 200
LOD 300
LOD 400
LOD 500



LA SORBONNE UNIVERSITY

Location: Abu Dhabi, United Arab Emirates
Program: University





info@planbeearchitecture.com
www.planbeearchitecture.com